

Ragesia

# The Kingdom of Dassen



Gate Pass

Fire Forest

Hetkonn Mountains

Tuda Mountains

Timor

Alydi Gap

Otdar Mountains

Gallo's Fend

Gallo

Glaskeel Cliffs

Thornwood

Chumnett River

Pitchwood

Rego

Dashgoban

Iz

Namin

Toraest Steppes

Bresk

Steppengard

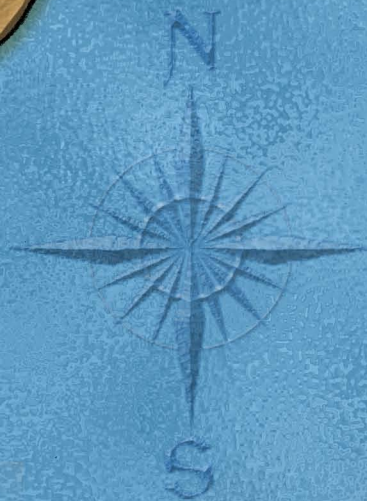
Nasham River

Ostalin

Dene

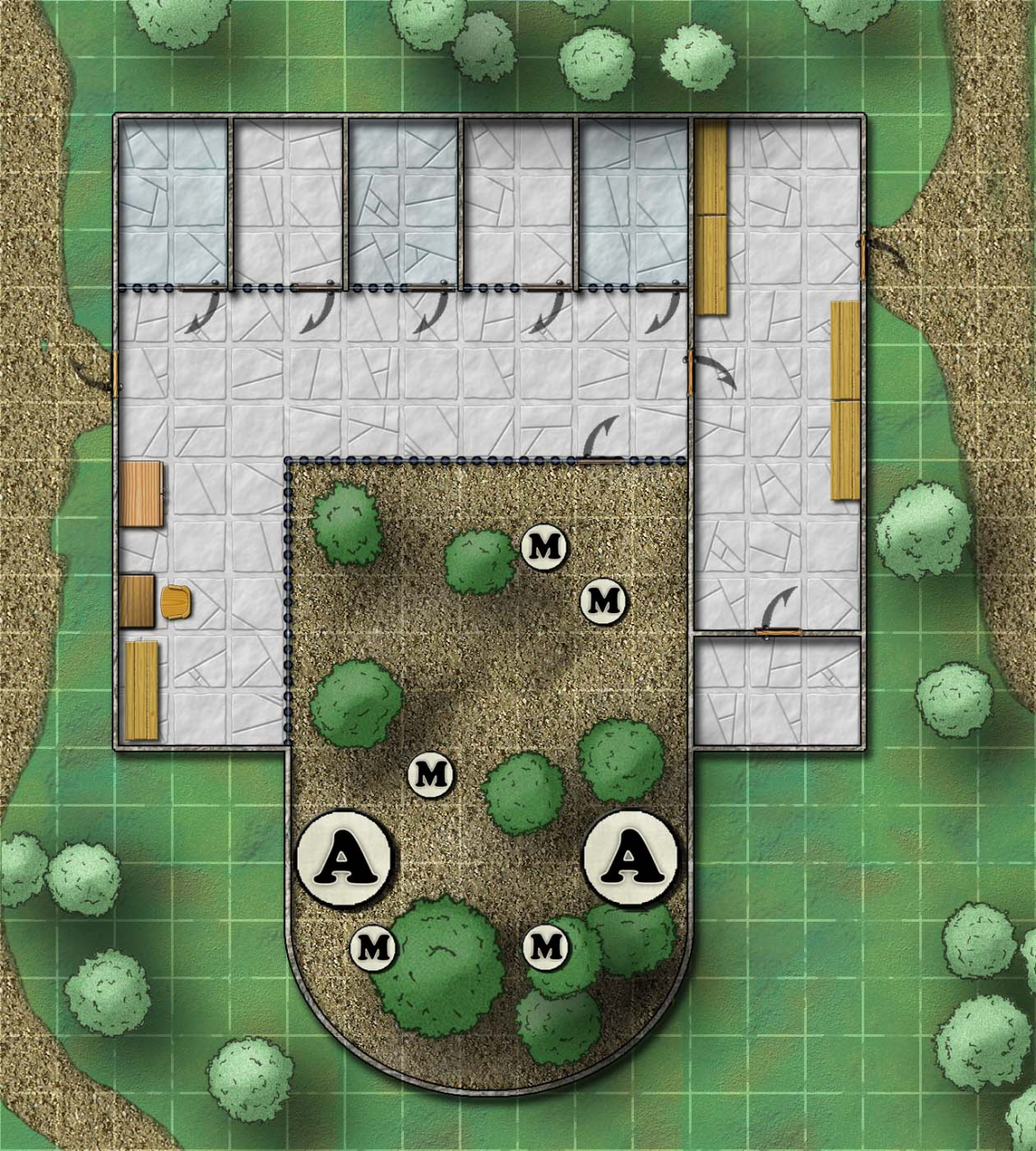
Megadon

Idemmer Wood



DISTANCE IN MILES







**B**

**I**

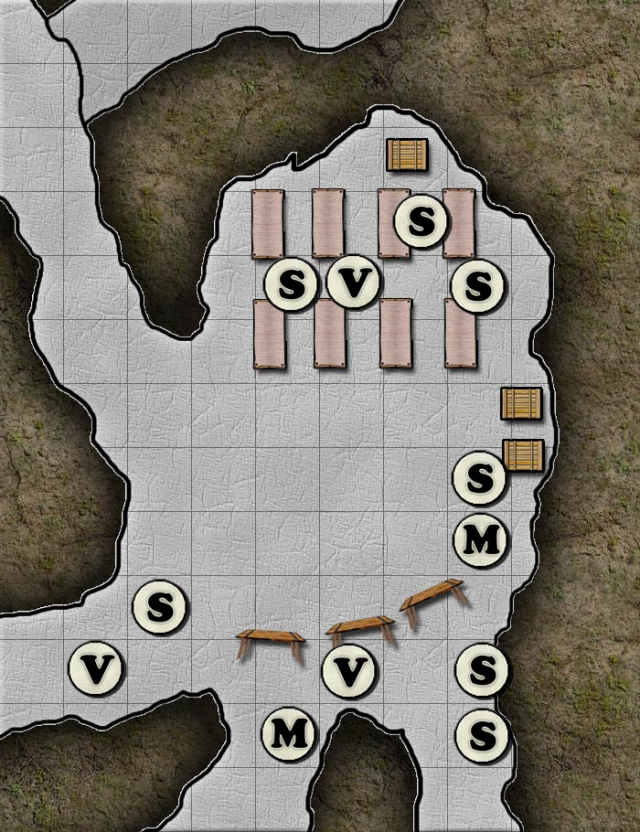
**I**

**B**

**I**

**B**

**I**



S

S

V

S



S

M

S

V

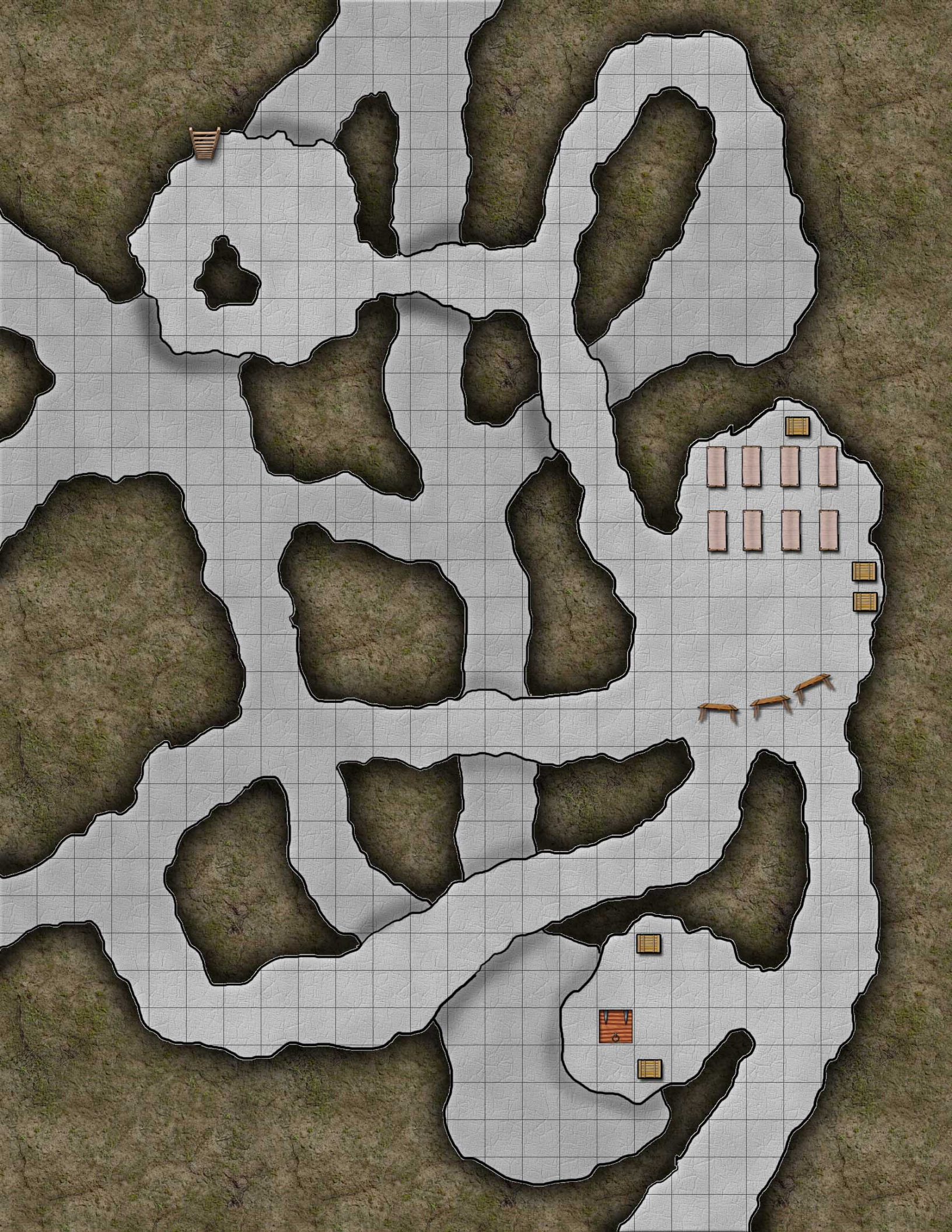


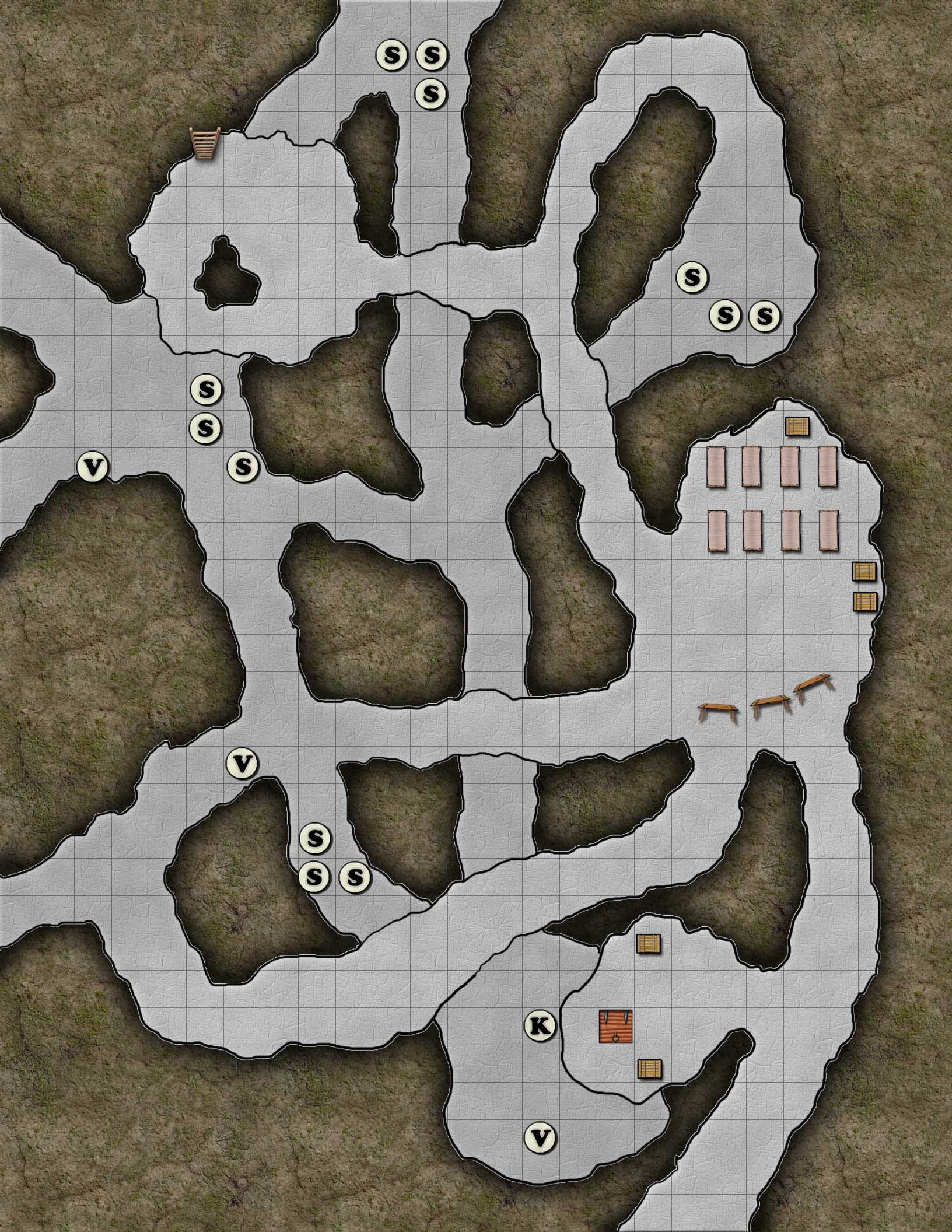
V

S

M

S





S S  
S

S  
S S

S  
S  
S

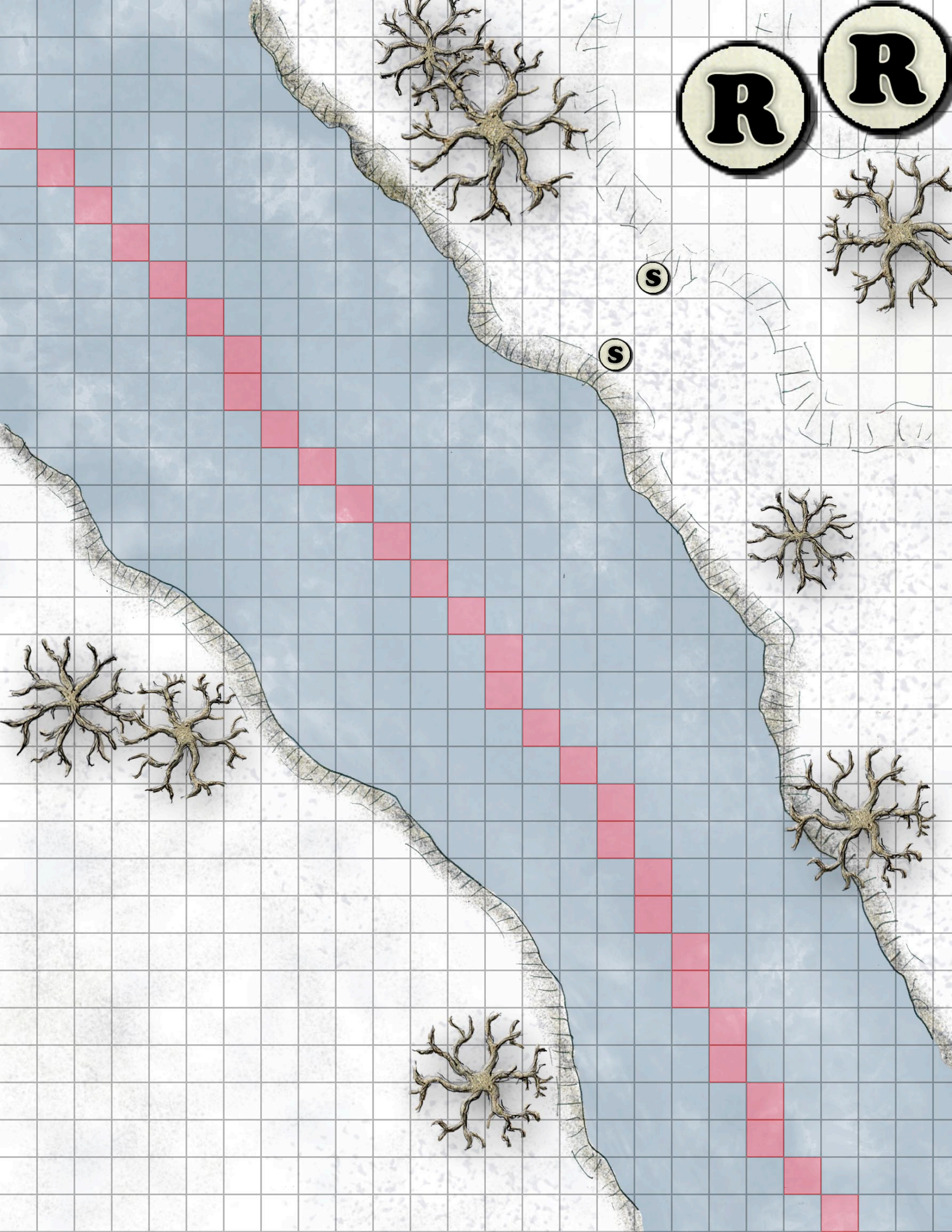
V

V

S  
S S

K

V

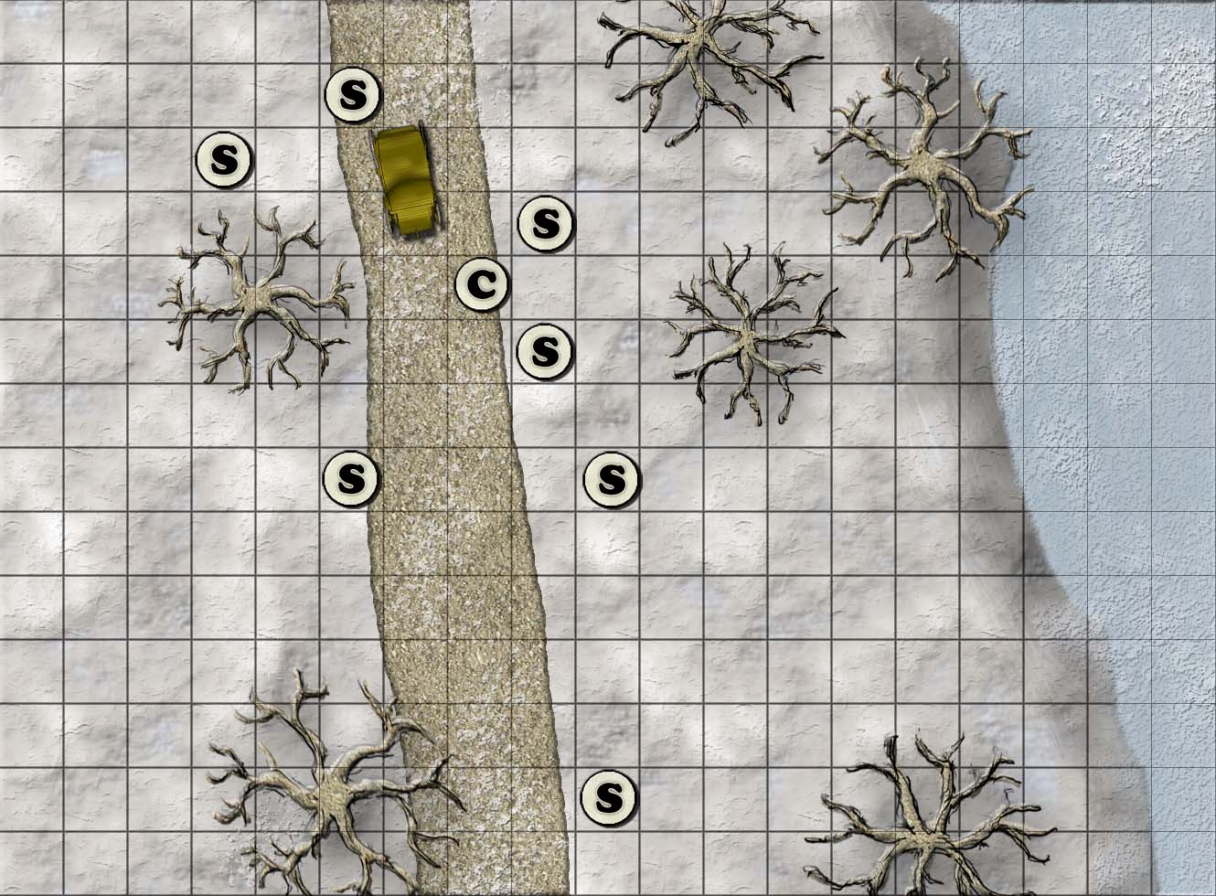


R

R

S

S



S

S

S

C

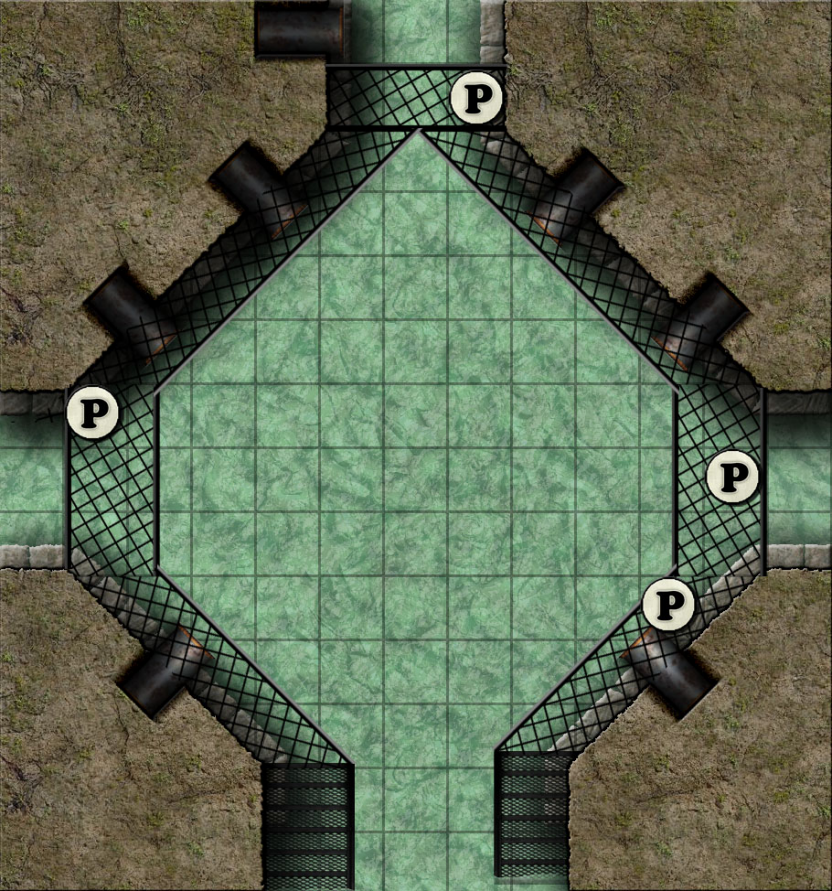
S

S

S

S



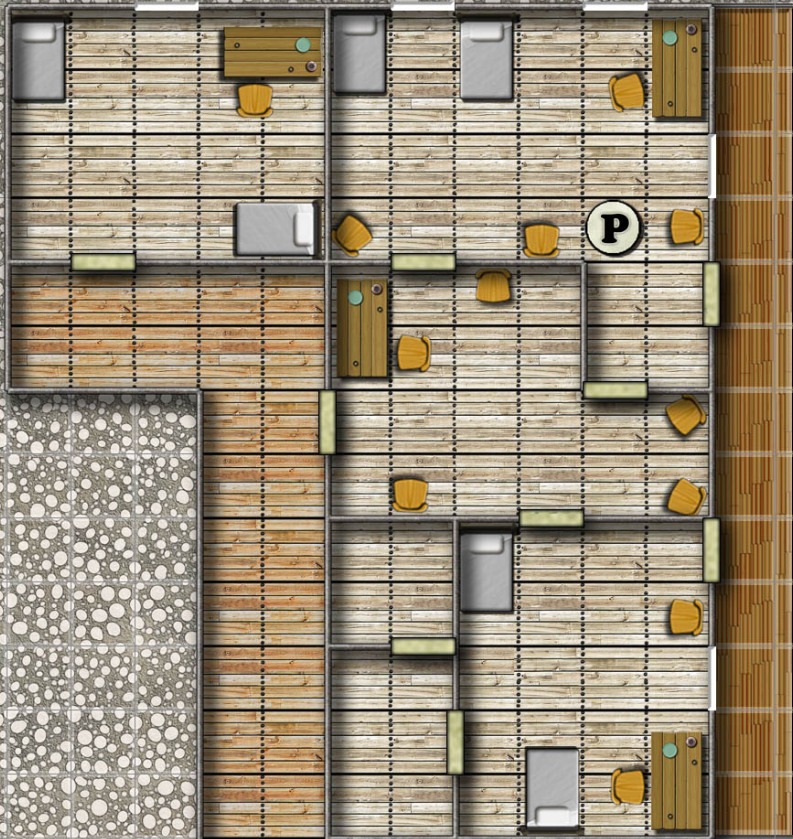


**P**

**P**

**P**

**P**



Gate



C

P

P

Start

Gate

C

I

P

I

I

S

I

P

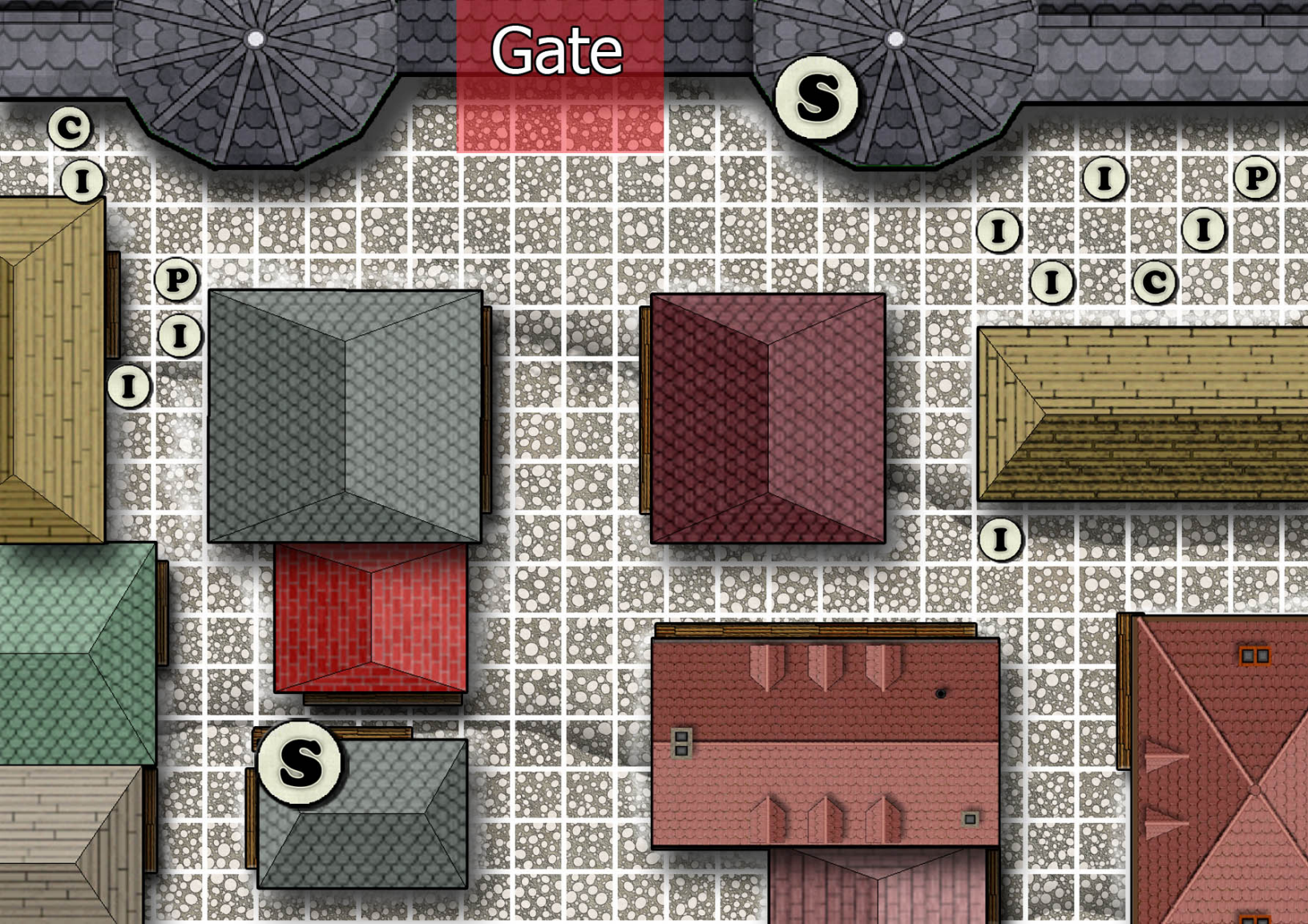
I

I

C

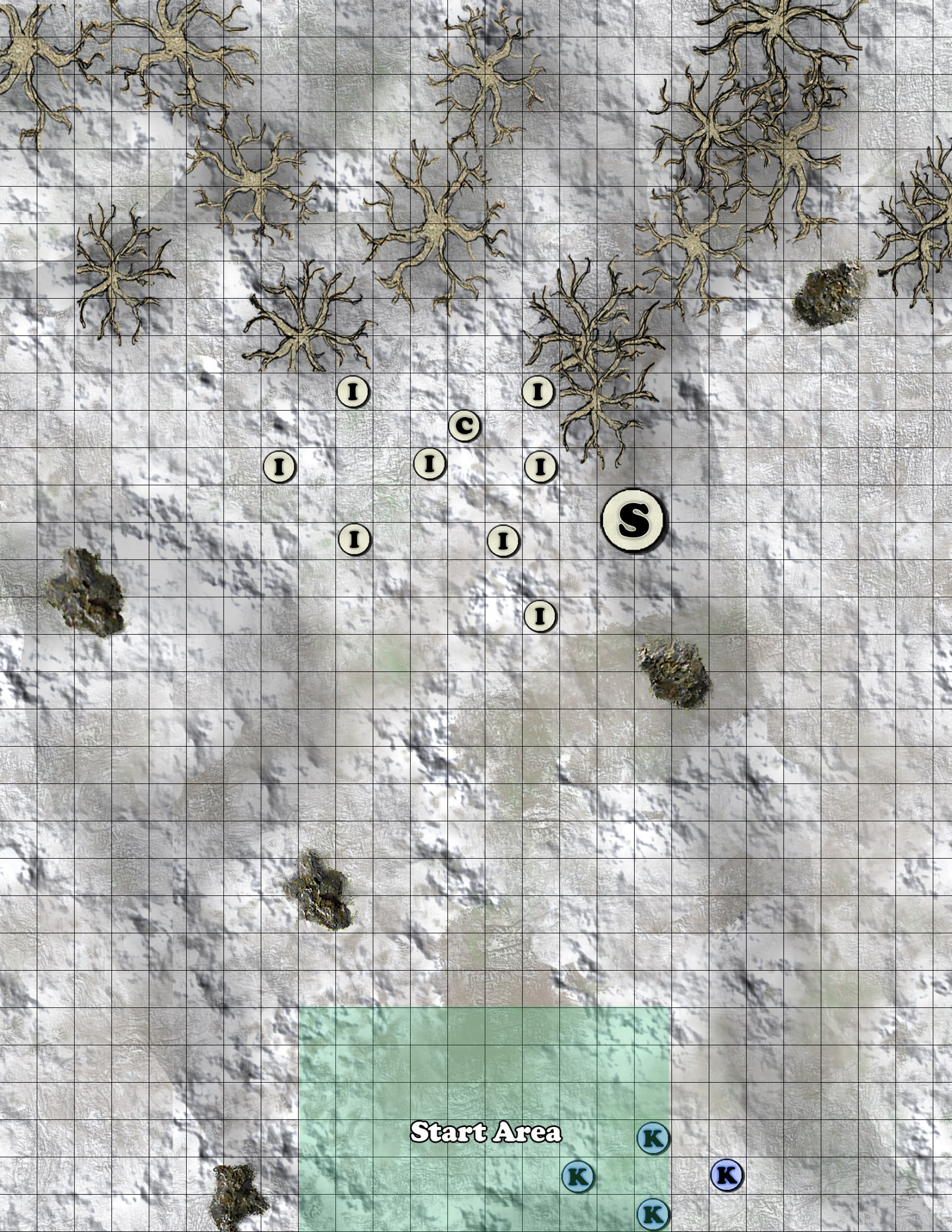
I

S



Start





I

C

I

I

I

I

S

I

I

I

Start Area

K

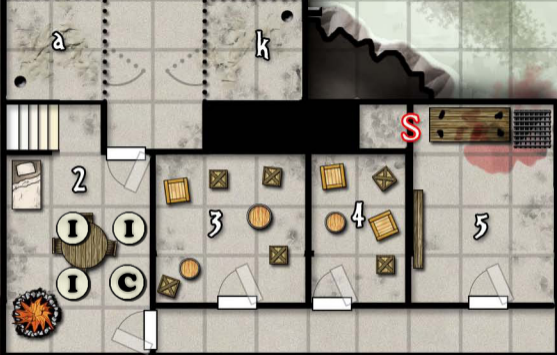
K

K

K

# Castle Steppengard Prison





SCM



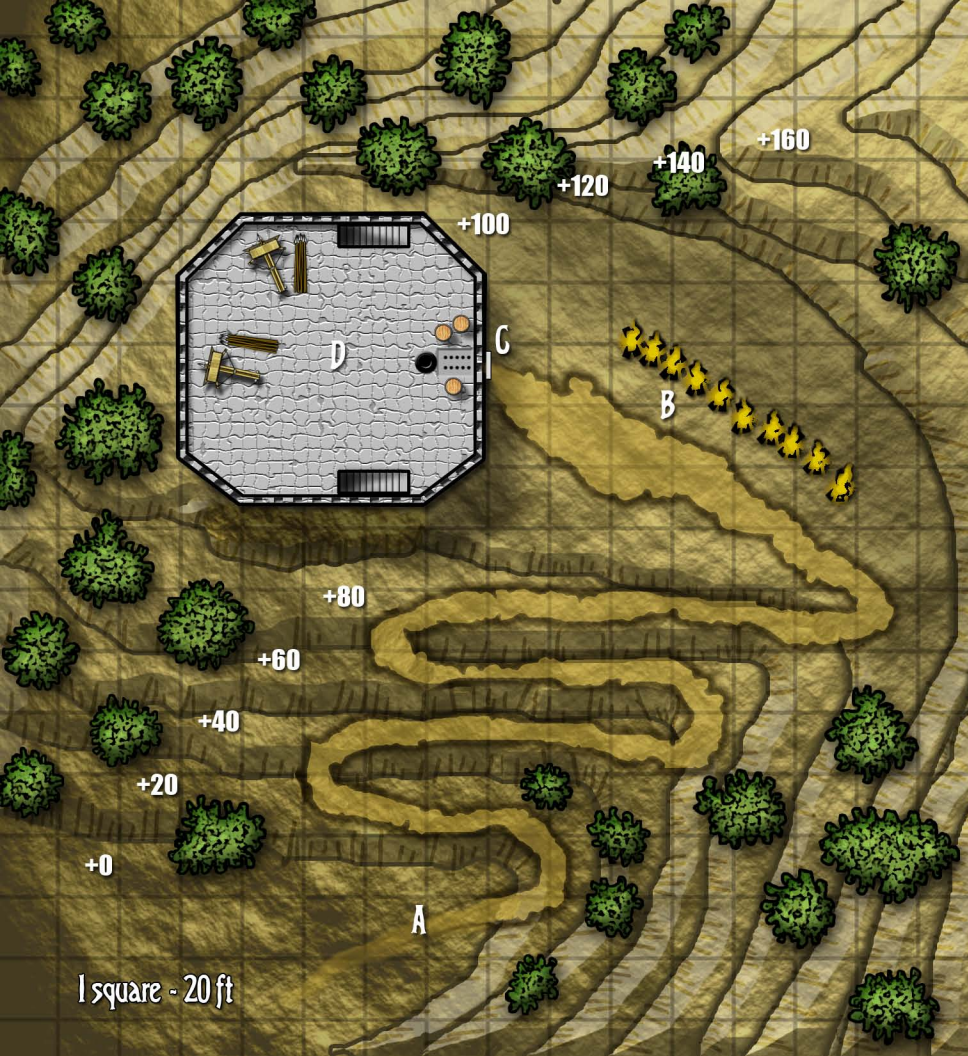


SCM



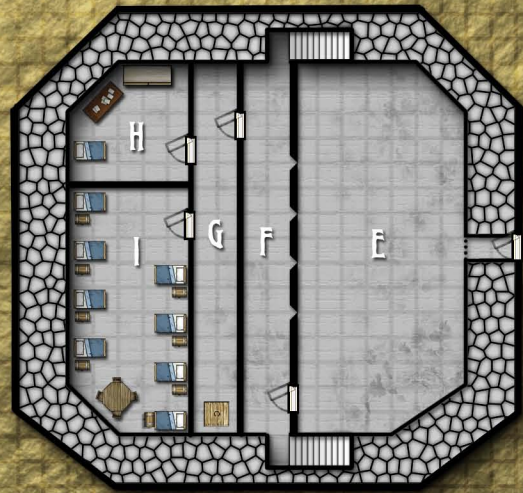
- (1, 1) Z
- (1, 2) Z
- (1, 3) Z
- (1, 4) Z
- (1, 5) Z
- (1, 6) Z
- (2, 1) Z
- (2, 2) Z





# Alydi Gap Outpost

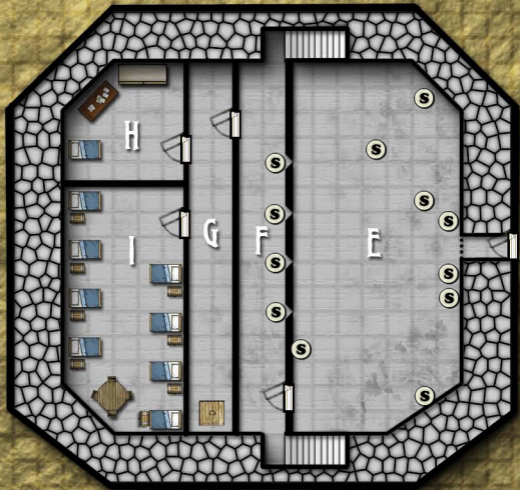
1 square - 5 feet

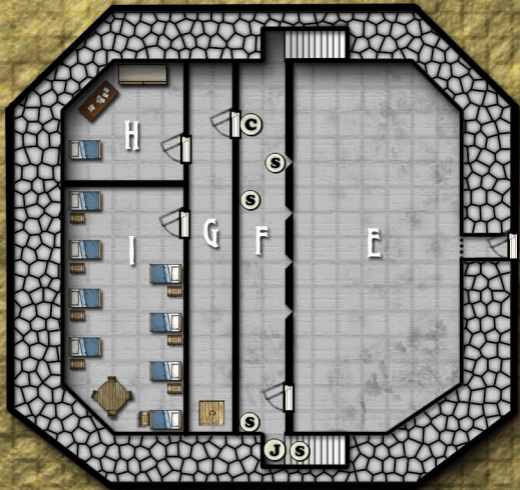


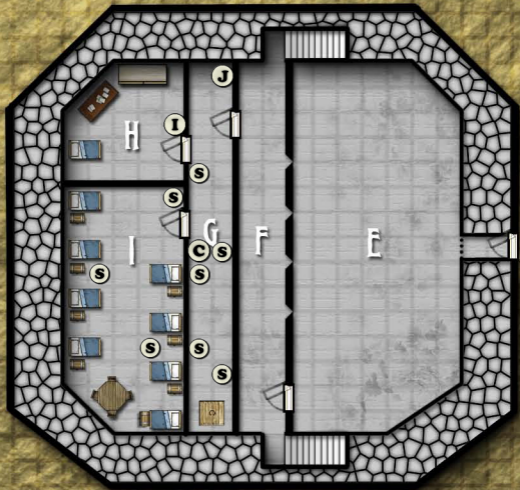
+100



S



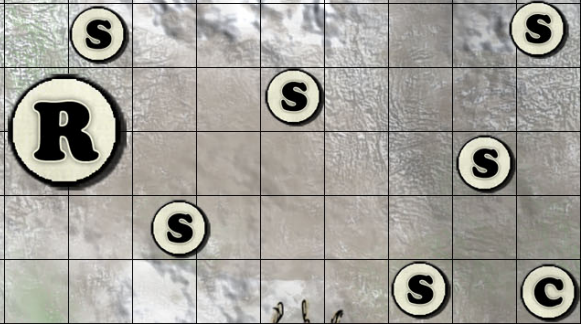


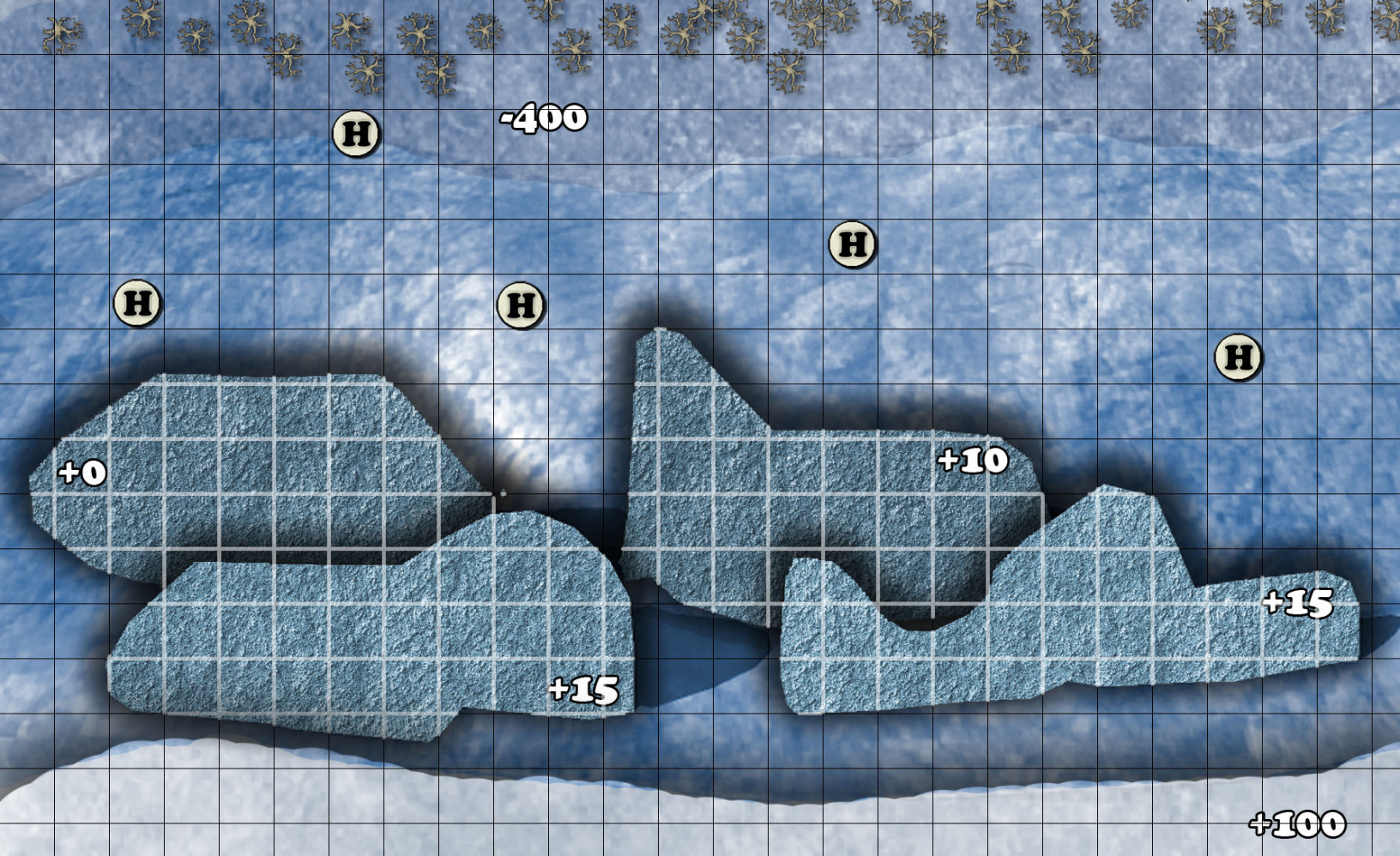






**Start Area**





H

-400

H

H

H

H

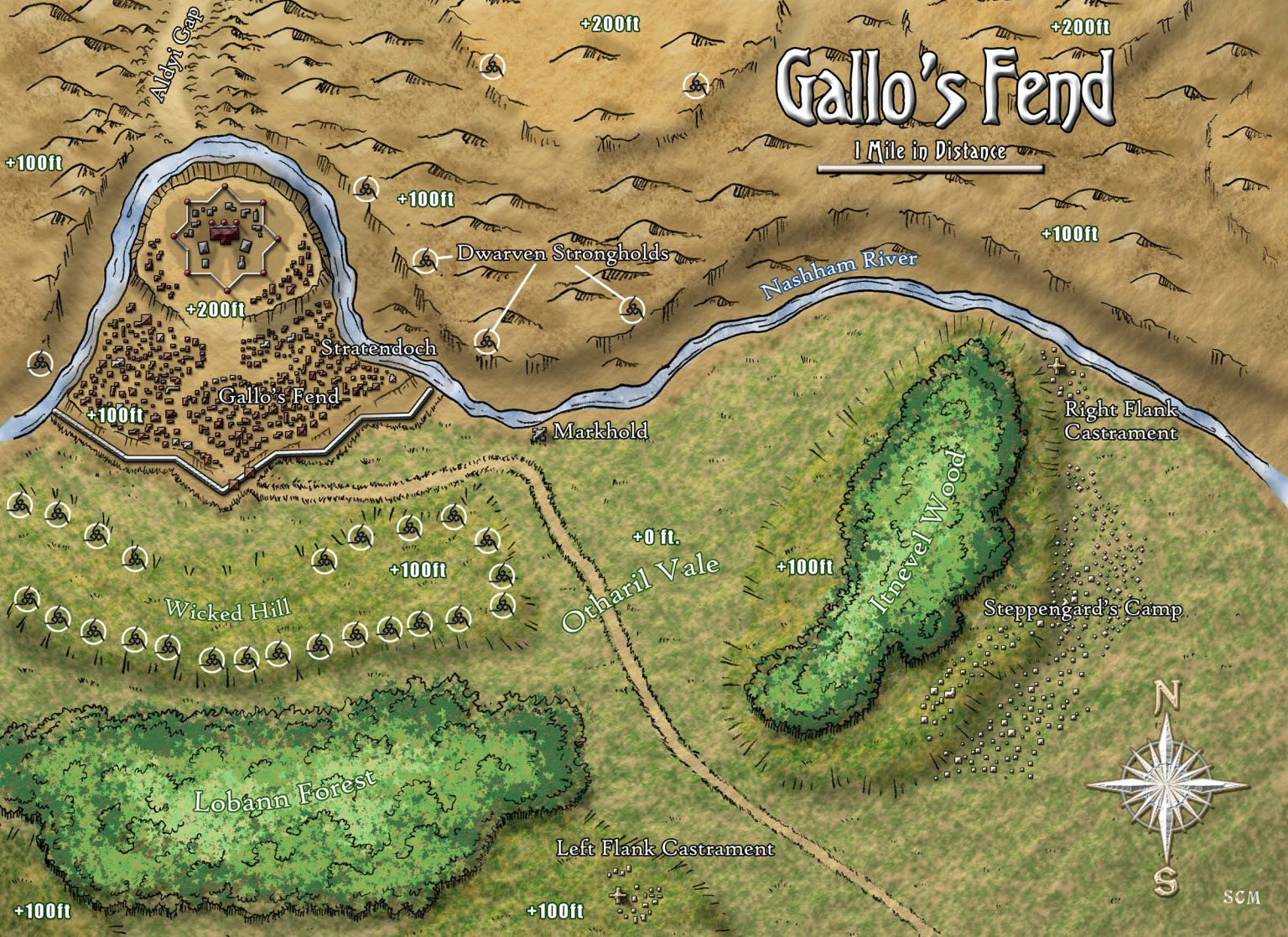
+0

+10

+15

+15

+100



# Gallo's Fend

1 Mile in Distance

Aldyi Gap

+200ft

+200ft

+100ft

+100ft

Dwarven Strongholds

Nashham River

+100ft

+200ft

Stratendoeh

Gallo's Fend

Markhold

Right Flank Castrament

+100ft

+0 ft.

+100ft

Otharil Vale

+100ft

Itnevel Wood

Steppengard's Camp

Wicked Hill

Lobann Forest

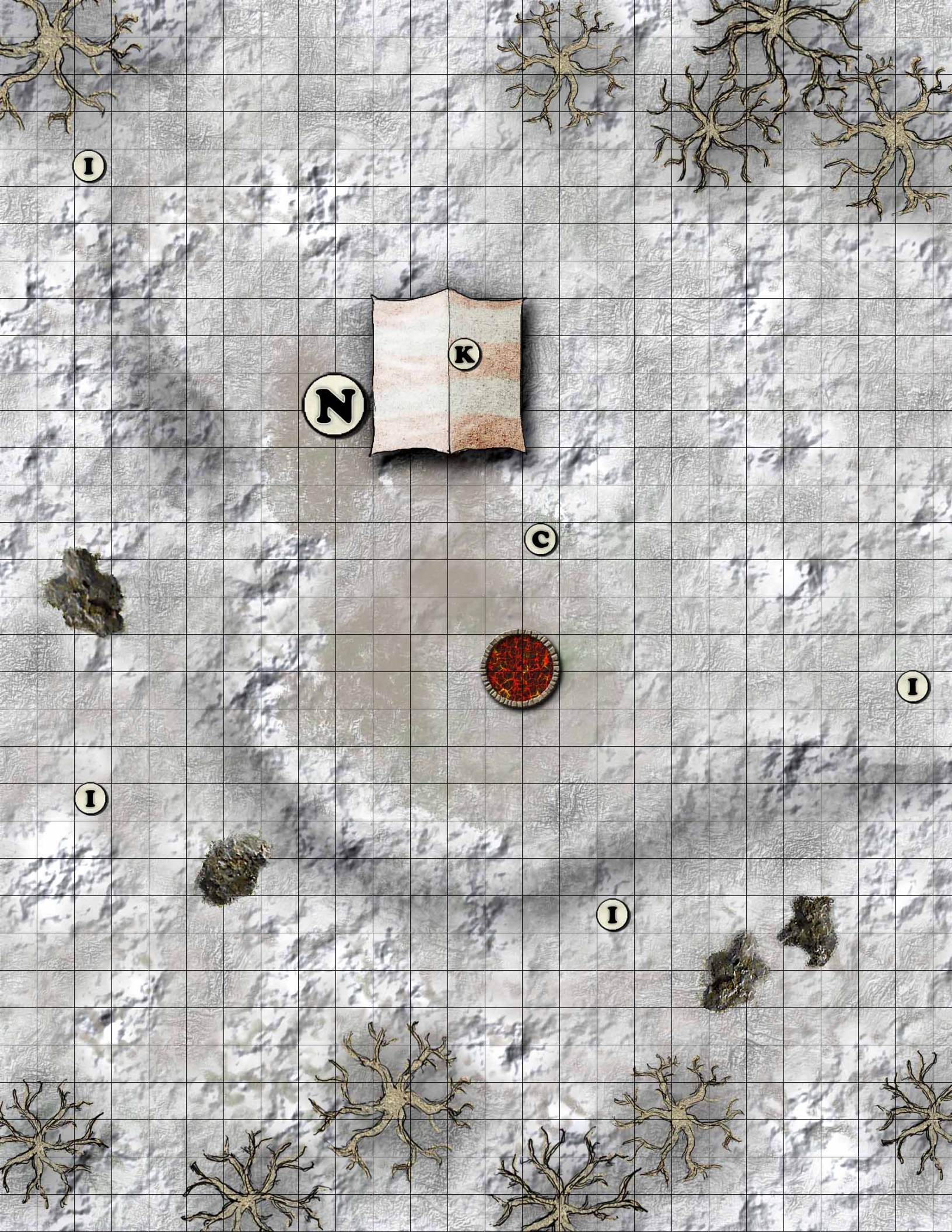
Left Flank Castrament



SCM

+100ft

+100ft



# Top of Map

I

C

P

I

I

I

S

I

I

I

I

I

S

I

I

B

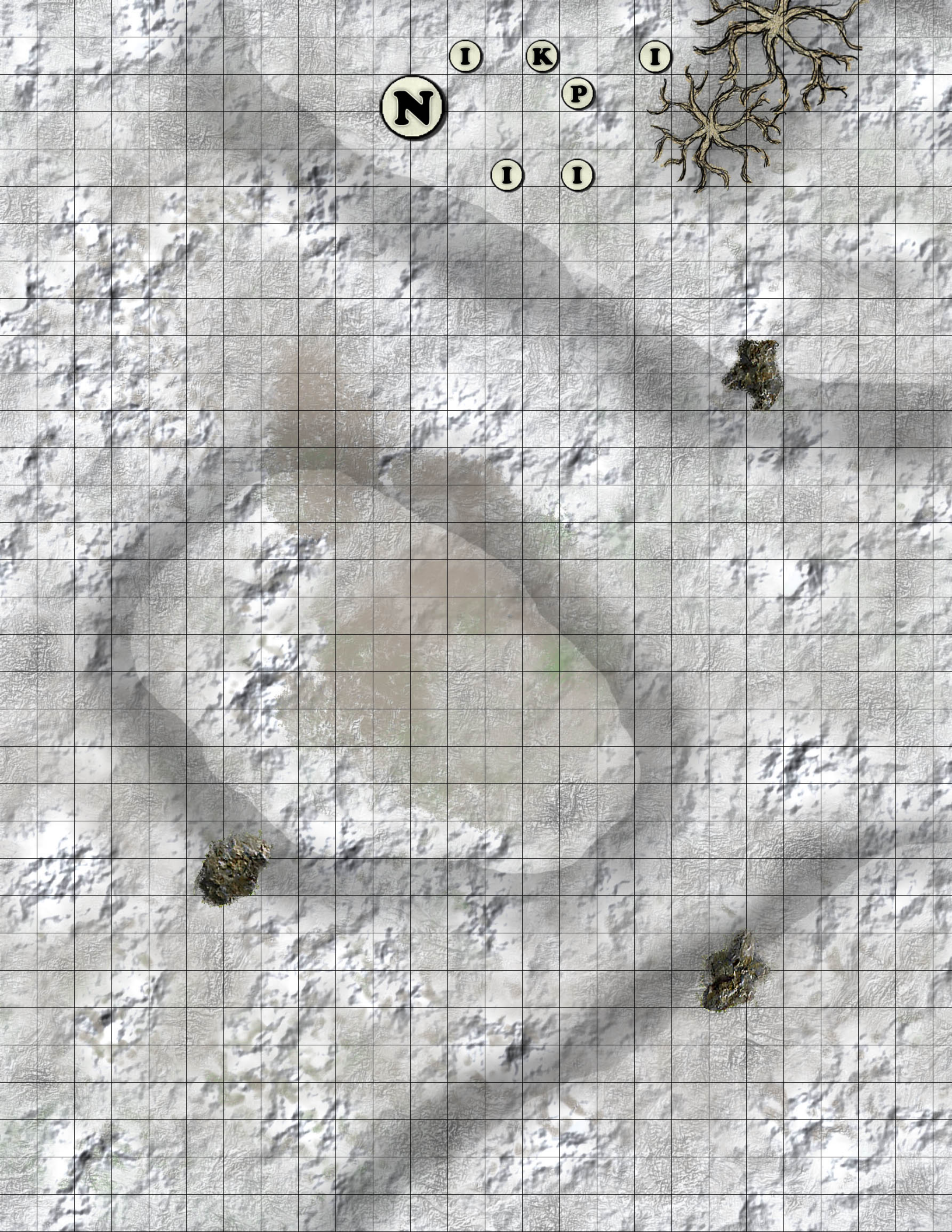
I

I

**Top of Map**







**N**

**I**

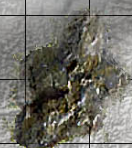
**K**

**I**

**P**

**I**

**I**







T

Z

Z

T

Z

Z

Z

Z

T

Z

Z



S

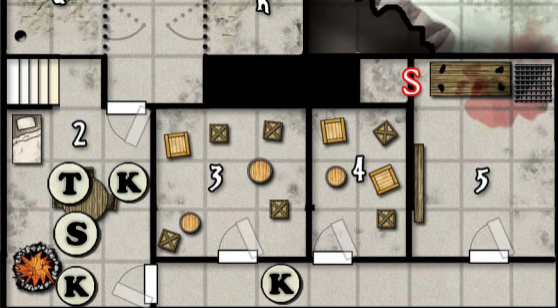


4



5





SCM

## Legend

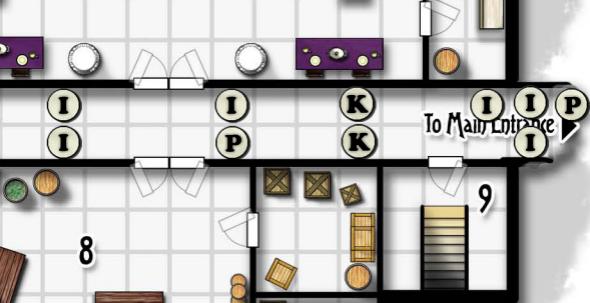
1. Banquet Hall
2. Stage
3. Actor's Suite
4. Men's Restroom
5. Women's Restroom
6. Servant's Restroom
7. Throne Room
8. Kitchen
9. Stairs to Prison

# Banquet Hall



1 square = 5 ft.

SCM



To Main Entrance

I  
I

I  
P

K  
K

I  
I  
P  
I

8

9

