

The Vault of Larin Karr
Scanned Book Maps

The original maps from the module were
scanned, compiled, and kindly contributed
by
Vincent Yarmoska (aka BaD_HeX)

Pembrose

Lord Kyle's
Manor

10

9

3

Market
Square

Kyle Statue

8

6

1

2

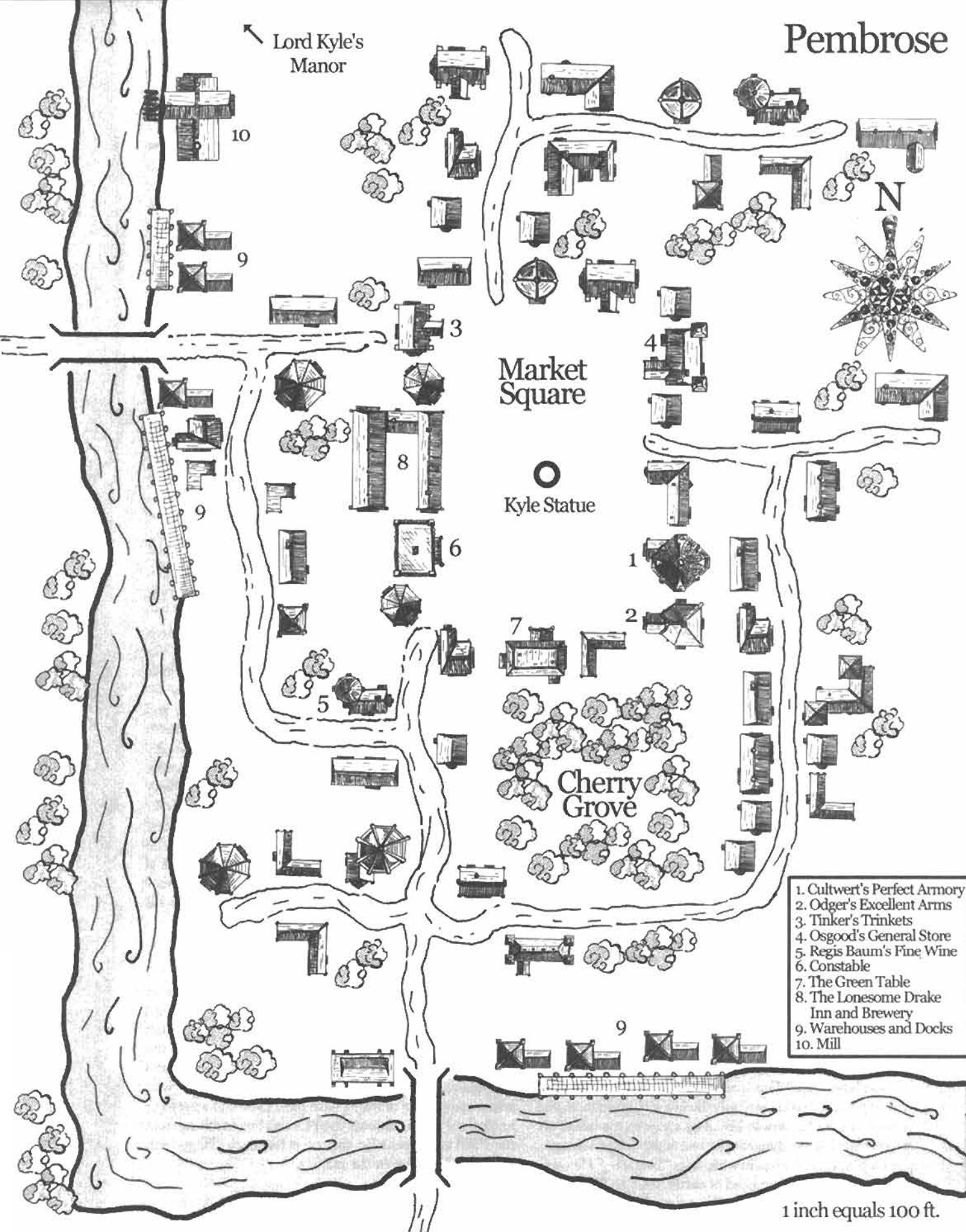
7

Cherry
Grove

5

1. Cultwert's Perfect Armory
2. Odger's Excellent Arms
3. Tinker's Trinkets
4. Osgood's General Store
5. Regis Baum's Fine Wine
6. Constable
7. The Green Table
8. The Lonesome Drake
Inn and Brewery
9. Warehouses and Docks
10. Mill

1 inch equals 100 ft.



The Quail Valley



River Wren

Bostwick

Forest of Nin

Pembrose

Quail River

Twain

Gaskar Hills

5 miles

A

B

K

G

H

I

J

F

C

D

E

M

L

O

N


Twain

N

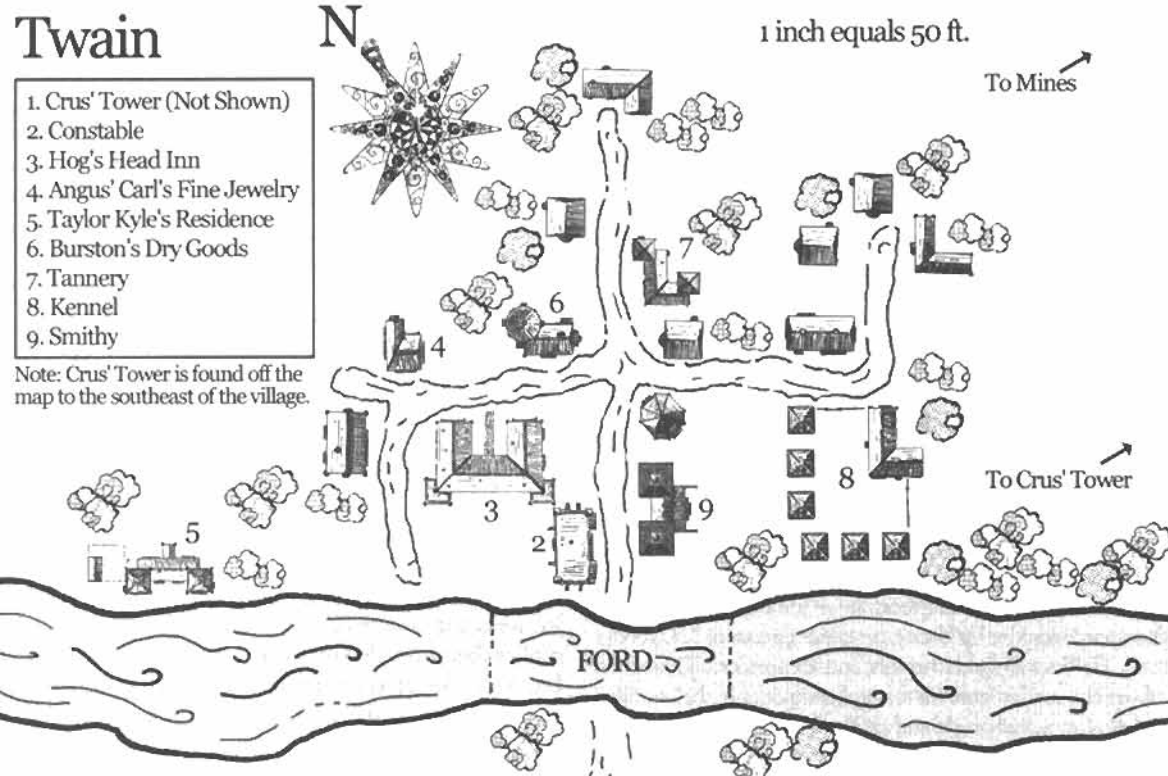
1 inch equals 50 ft.

1. Crus' Tower (Not Shown)
2. Constable
3. Hog's Head Inn
4. Angus' Carl's Fine Jewelry
5. Taylor Kyle's Residence
6. Burston's Dry Goods
7. Tannery
8. Kennel
9. Smithy

To Mines 

To Crus' Tower 

Note: Crus' Tower is found off the map to the southeast of the village.



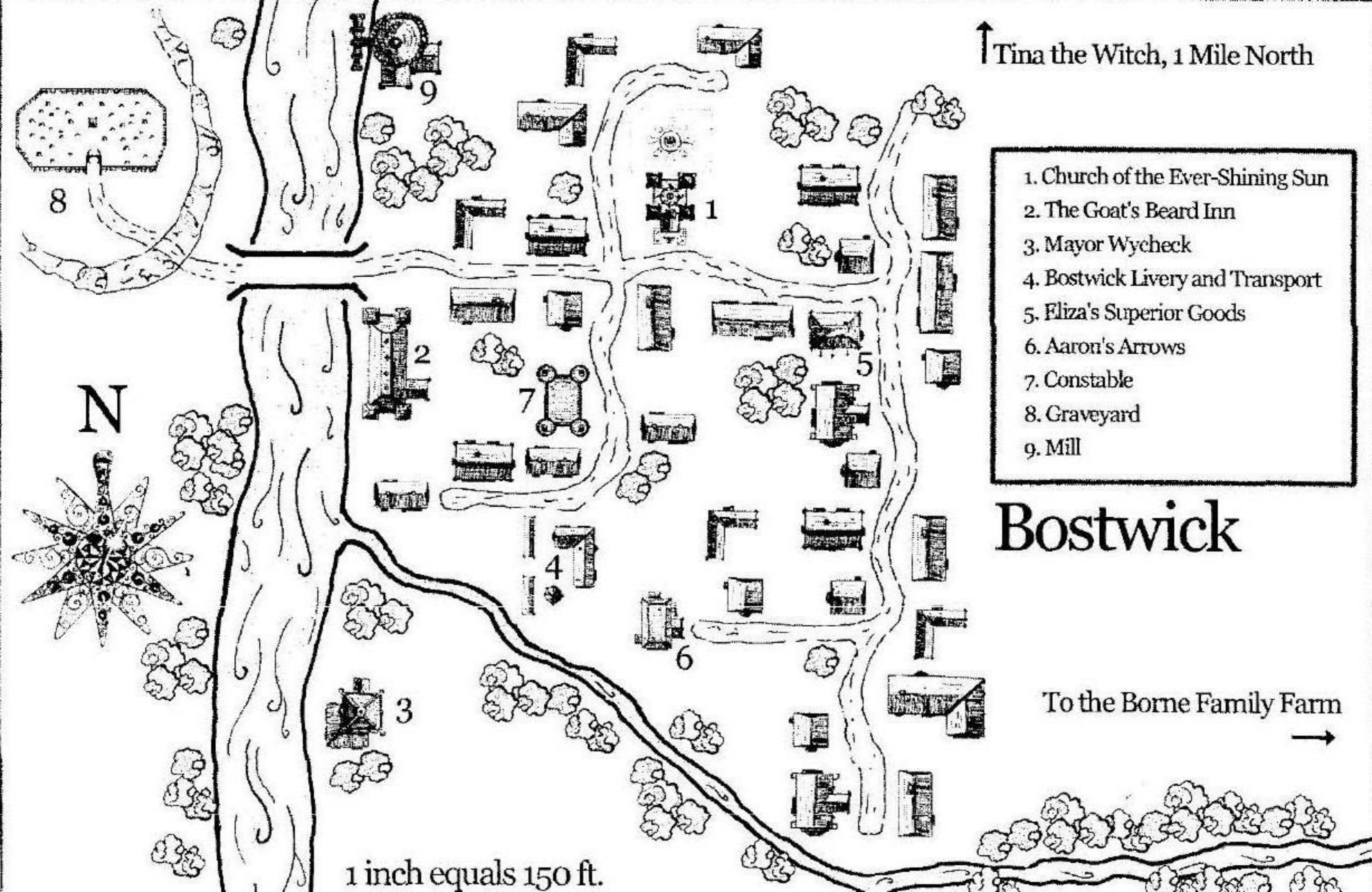
↑ Tina the Witch, 1 Mile North

- 1. Church of the Ever-Shining Sun
- 2. The Goat's Beard Inn
- 3. Mayor Wyccheck
- 4. Bostwick Livery and Transport
- 5. Eliza's Superior Goods
- 6. Aaron's Arrows
- 7. Constable
- 8. Graveyard
- 9. Mill

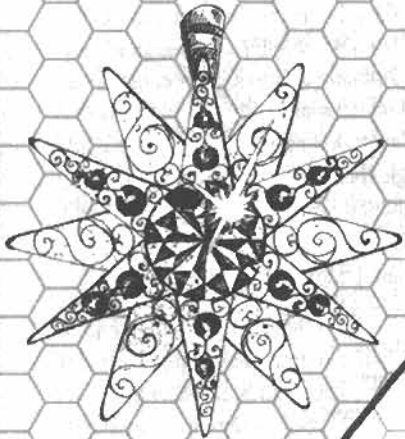
Bostwick

To the Borne Family Farm →

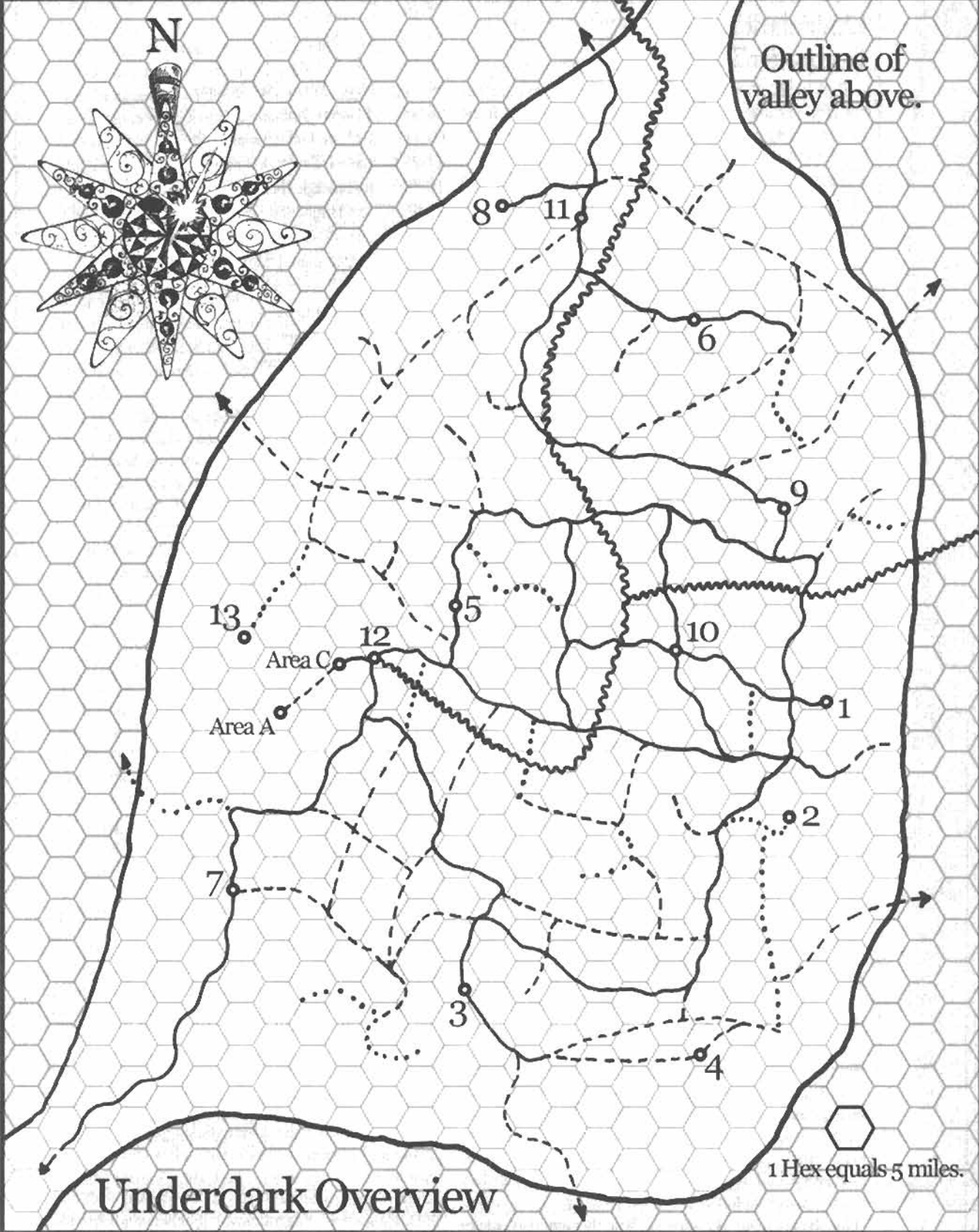
1 inch equals 150 ft.



N



Outline of valley above.



Underdark Overview

1 Hex equals 5 miles.



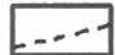
Primary Passage



Tertiary Passage



Underground River
(20 ft. to 220 ft.)



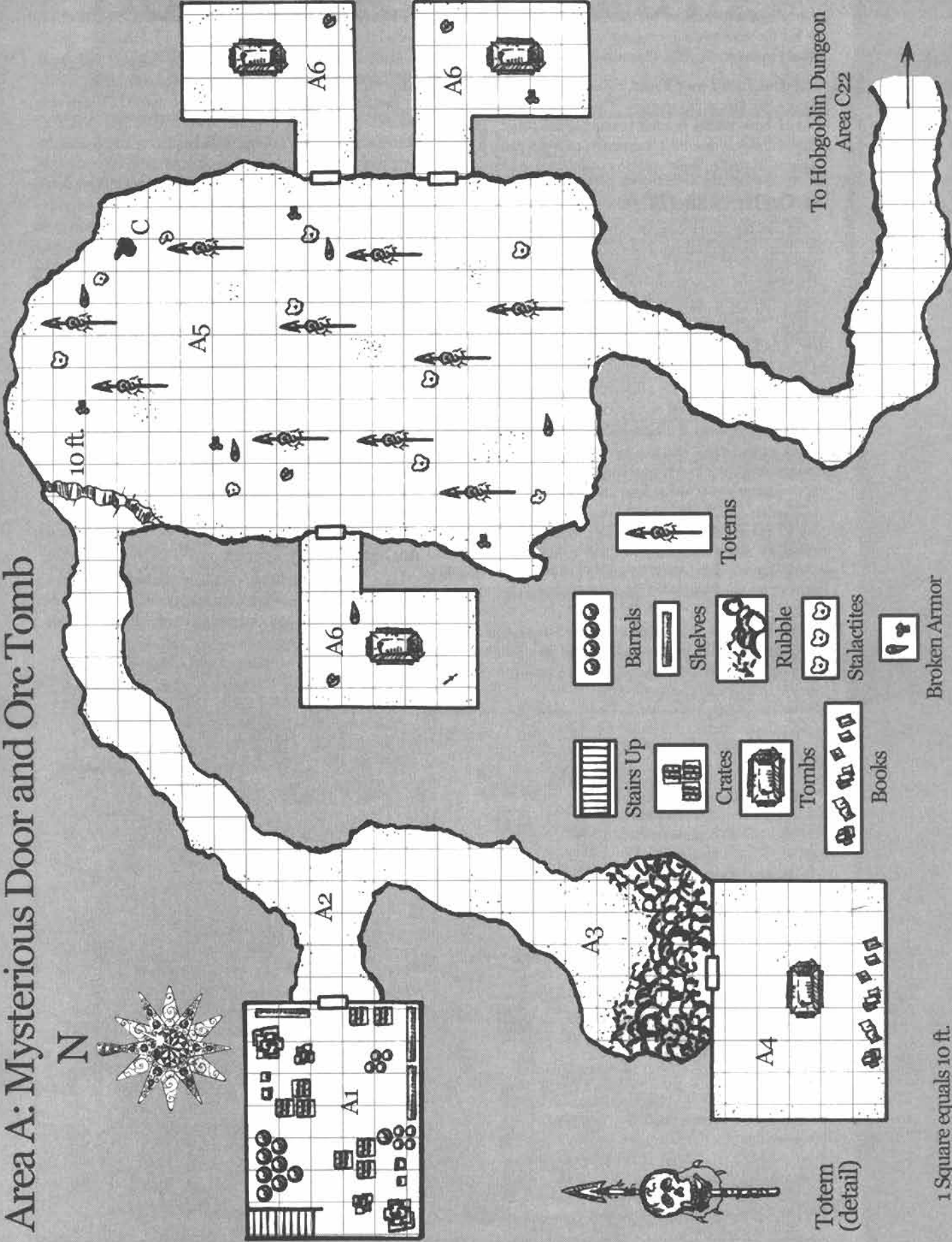
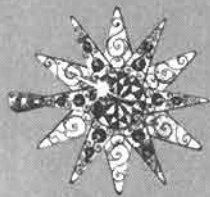
Secondary Passage



Encounter Area

Area A: Mysterious Door and Orc Tomb

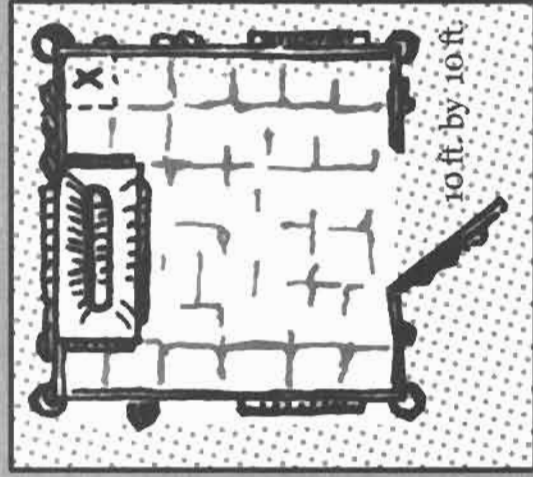
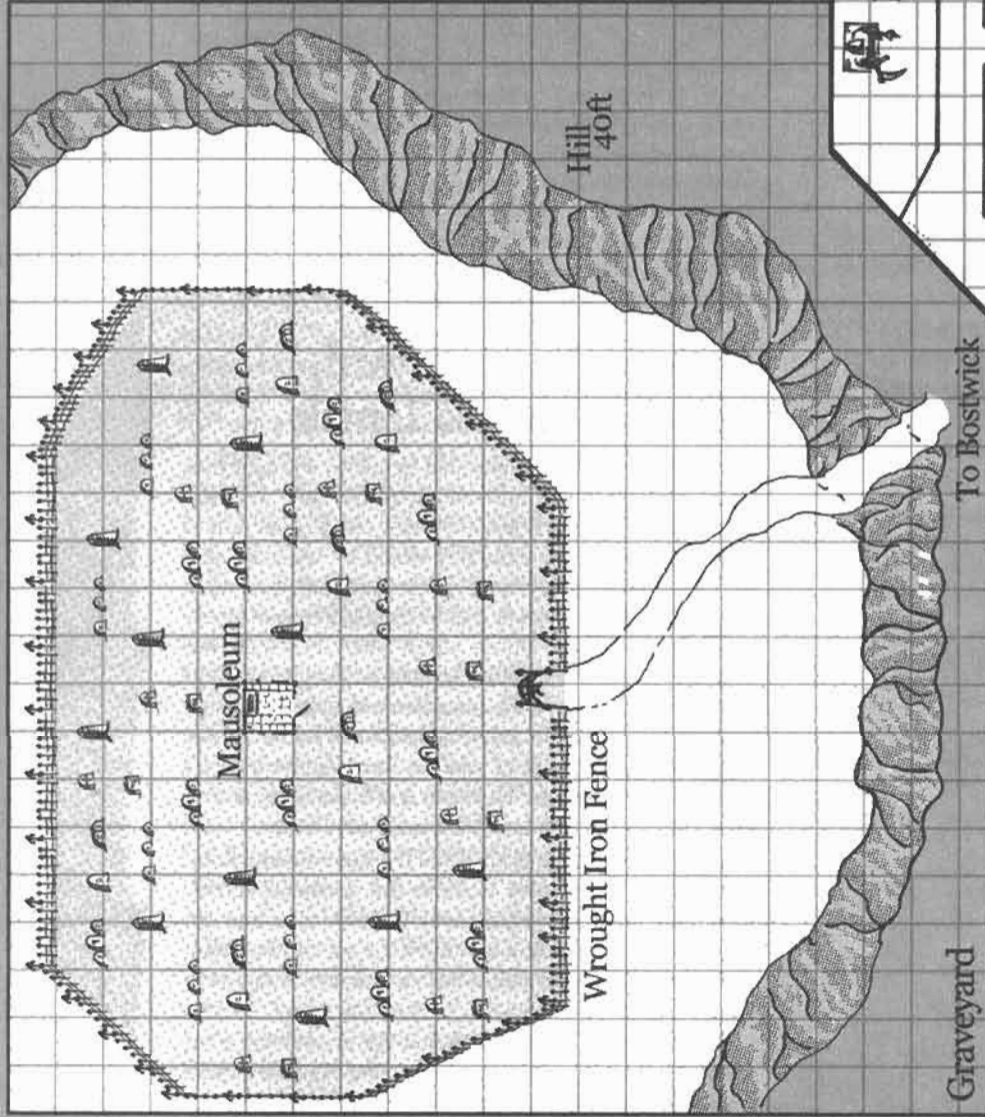
N



Totem (detail)

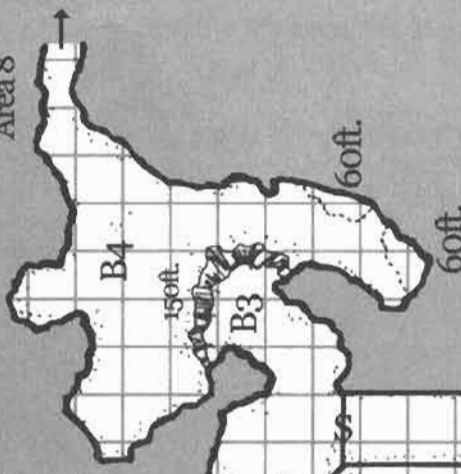
1 Square equals 10 ft.

Area B: Graveyard

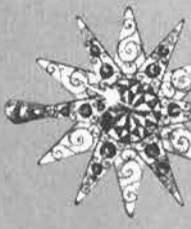


Mausoleum (Detail)

To Underdark Area 8



N

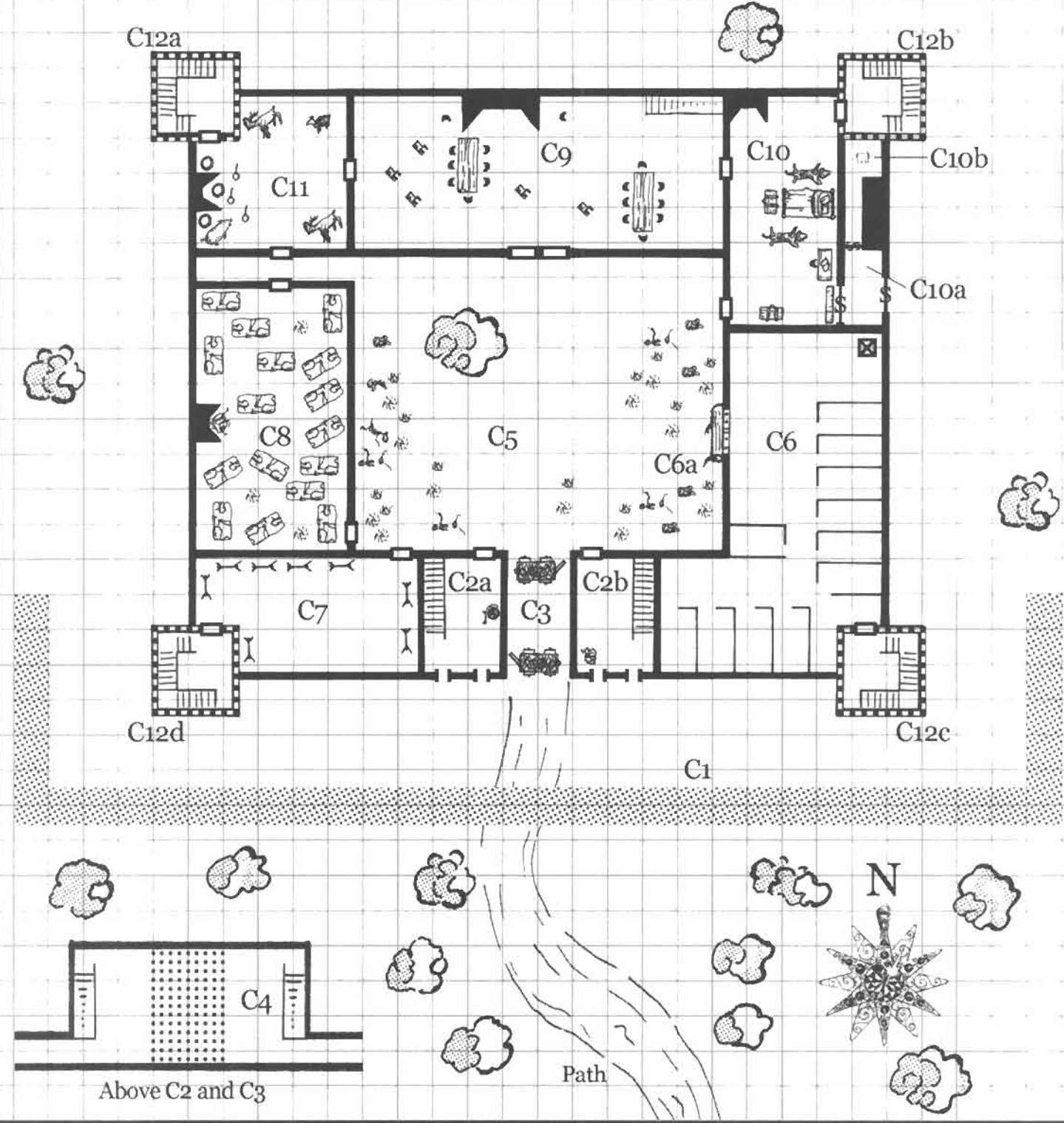


- Secret Door
- Double Door
- Stone Bench
- Ledge
- Ladder
- Tomb
- Portcullis
- Cliff
- Statue
- Ceiling Trapdoor



1 Square equals 10 ft.

Temple of Nergal



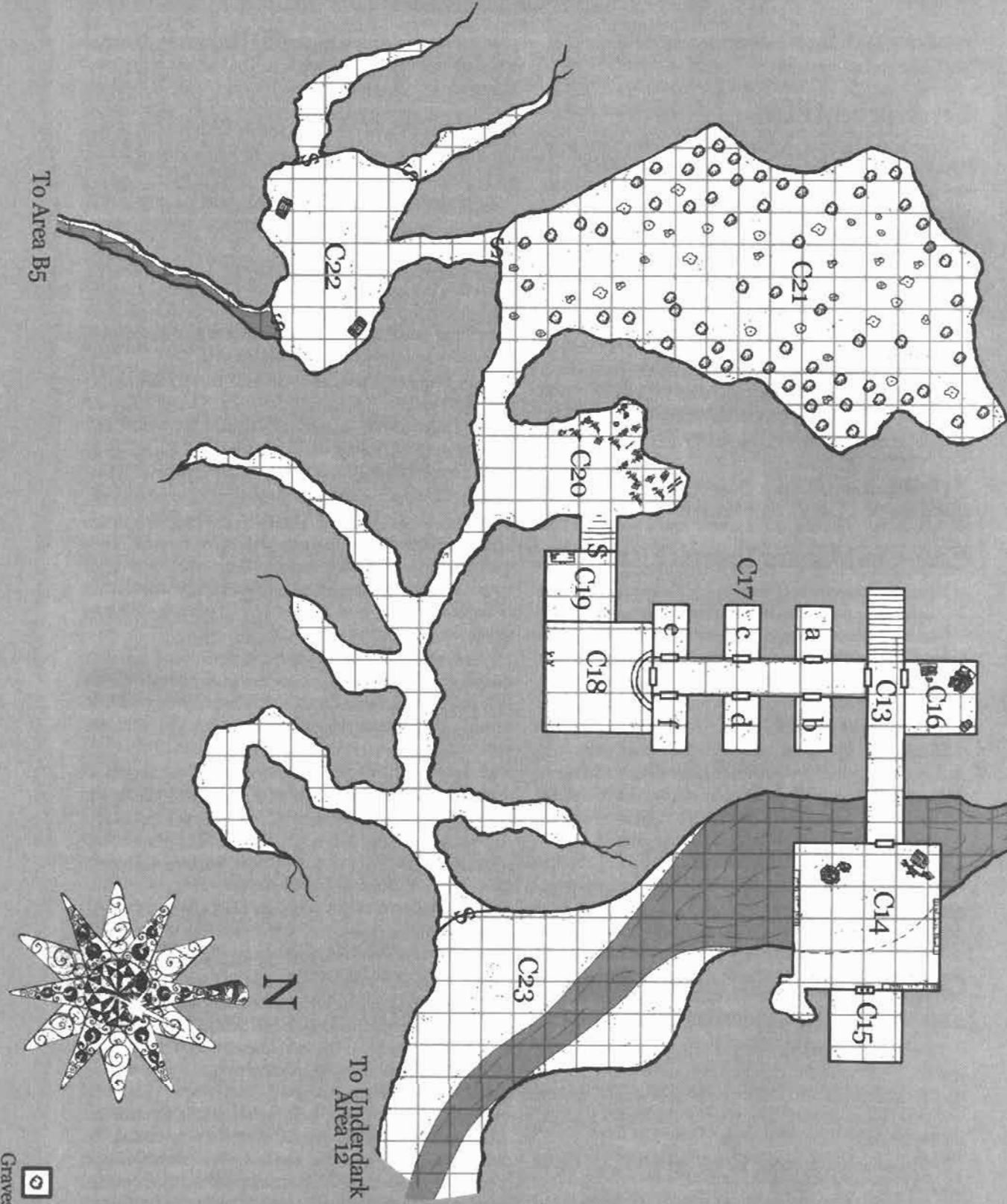
Door	Slit	Secret Door	Murder Holes	Secret Floor Panel	Rampart	Stairs Up	Stairs Down	Fireplace	Pit Trap	Trees	Cart	Table and Chairs	Rag Bed	Carcass Rack
Invisible Chest	Pots & Pans	Chest	Room Furnishings	Shelf										


Area C (part 1): Hobgoblin Keep

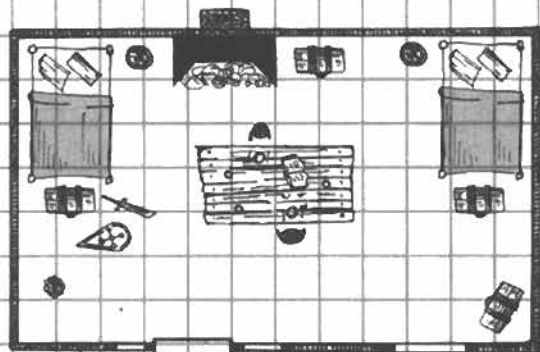
1 Square equals 10 ft.

Area C (part 2): Hobgoblin Dungeon

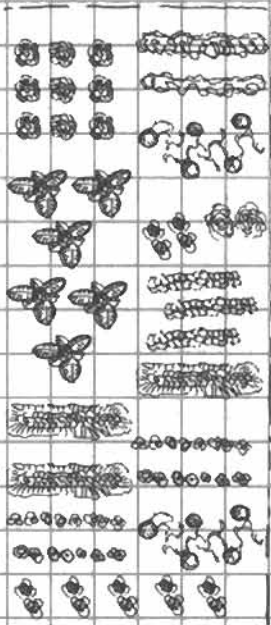
1 Square equals 10 ft.



-  Door
-  Iron Door
-  Secret Door
-  Stairs Up
-  Stairs Down
-  Stalactite
-  Stalagmite
-  Steps
-  Desk
-  Chest
-  Well and Rope Ladder
-  Shelf
-  Shackles
-  Cabinet
-  Bones
-  Graves



Garden



Door



Window



Bed



Chest



Table and Chairs



Vegetables

N

Stone Path

Area D: Minx Brothers

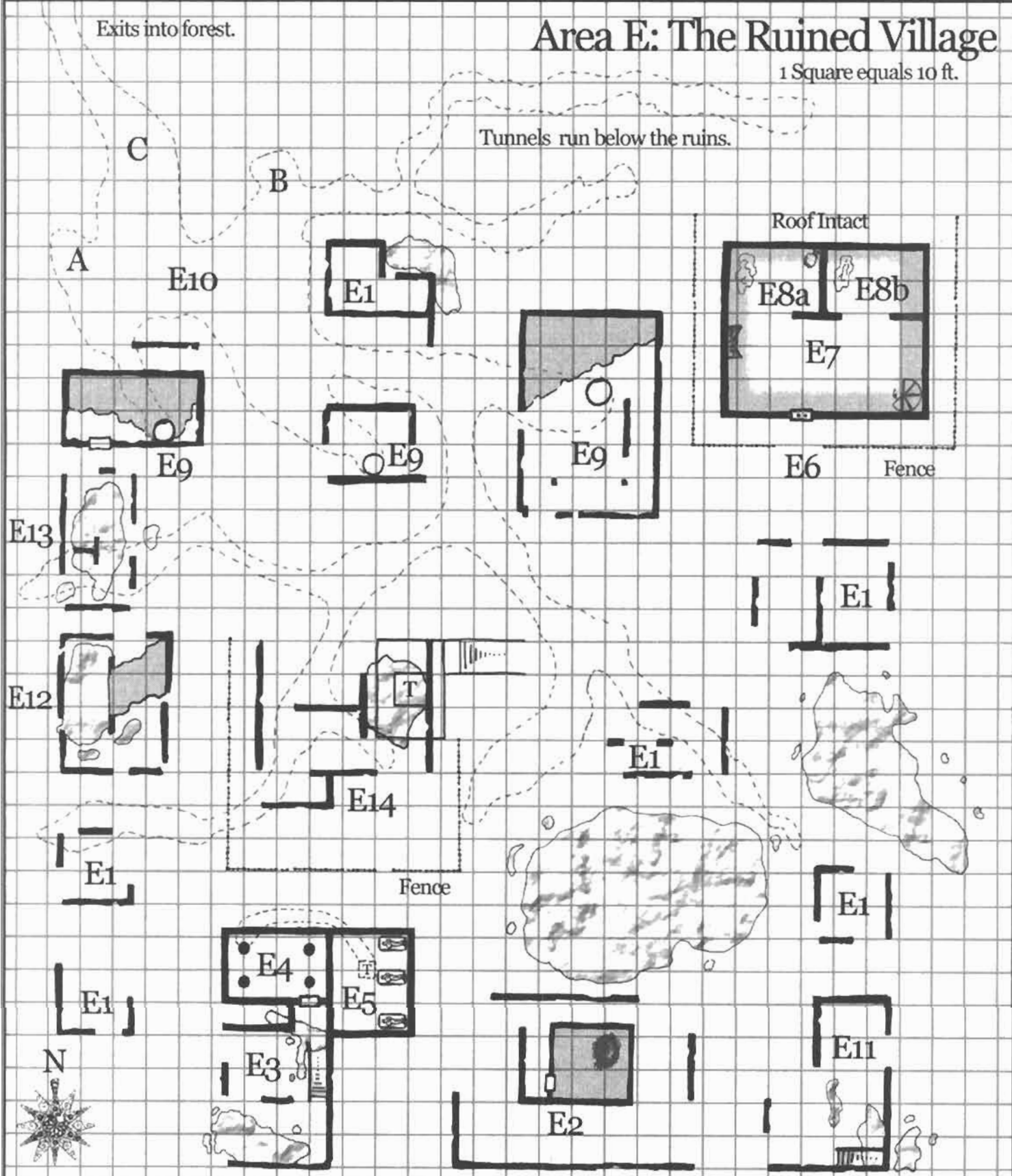
1 Square equals 2.5 ft.

Exits into forest.

Area E: The Ruined Village

1 Square equals 10 ft.

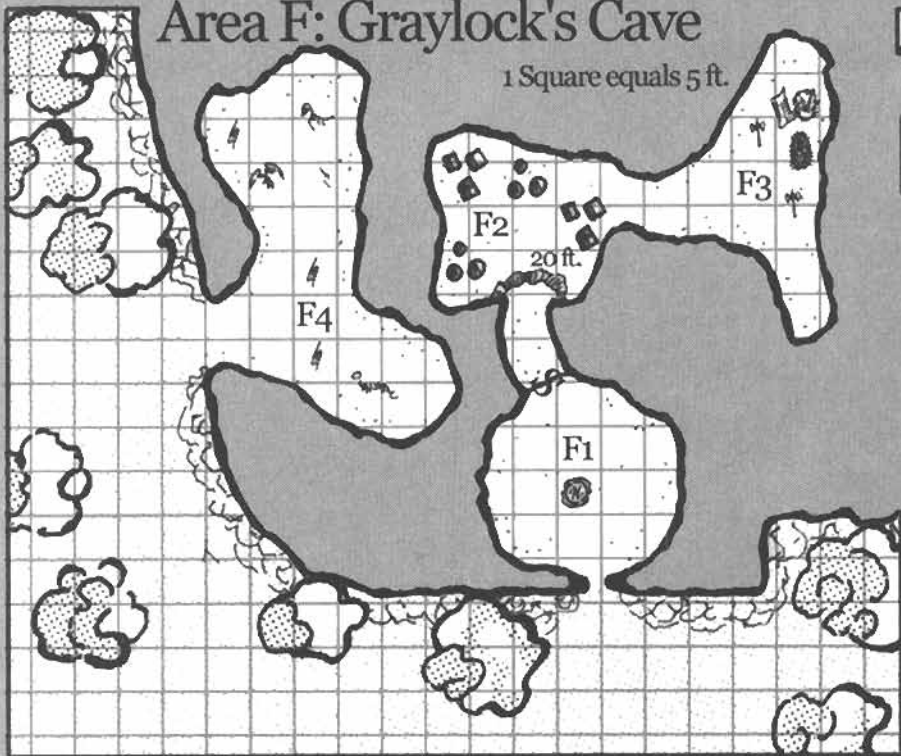
Tunnels run below the ruins.



Underground Caverns	Roofing	Rubble	Stairs Down	Cylinder	Trap Door	Tomb	Nest	Bed	Ankh Hole	Sack	Spiral Staircase

Area F: Graylock's Cave

1 Square equals 5 ft.



Ledge



Foliage



Trees



Bones



Boxes

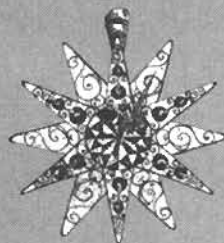


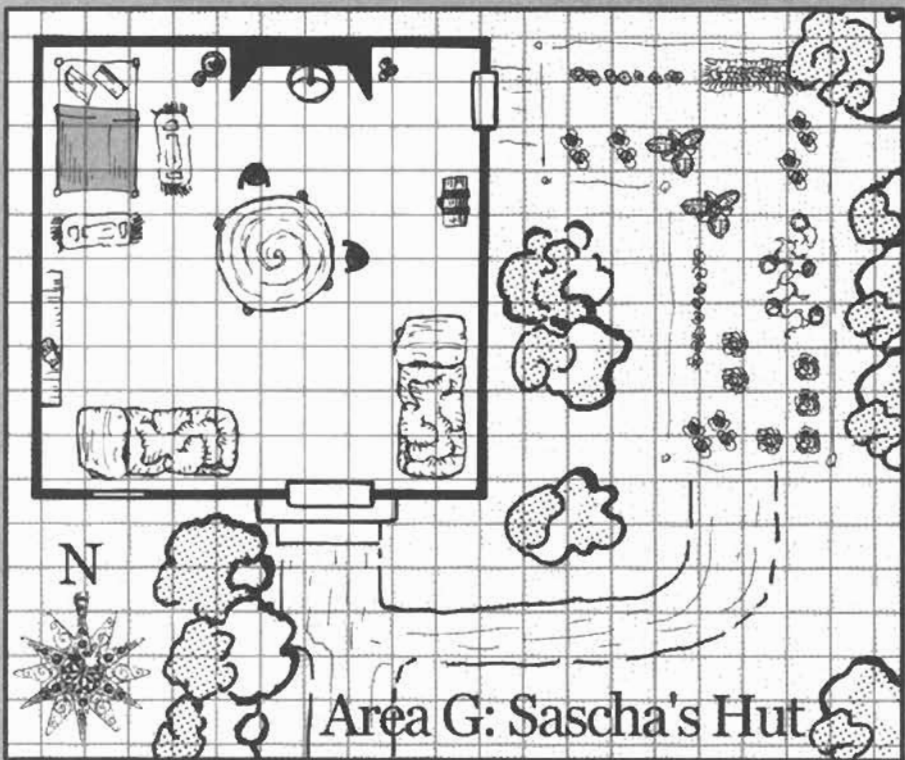
Barrels



Fire Pit

N

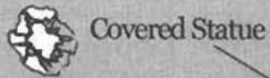




Area G: Sascha's Hut

-  Door
-  Window
-  Fireplace
-  Trees
-  Buckets
-  Vegetables
-  Chest
-  Rug
-  Cauldron
-  Table and Chairs
-  Beds
-  Shelf

1 Square equals 2 ft.



Covered Statue



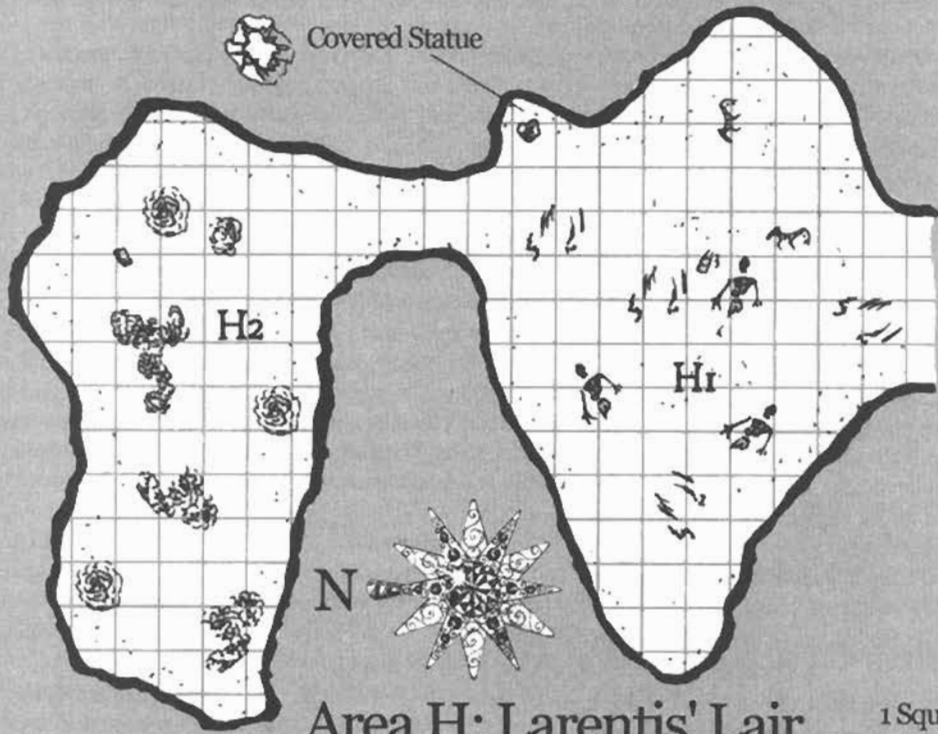
Bones



Teak Box



Treasure Piles



Area H: Larentis' Lair

1 Square equals 10 ft.

Area I: Elves



Tent



Trees



Campfire
and Logs

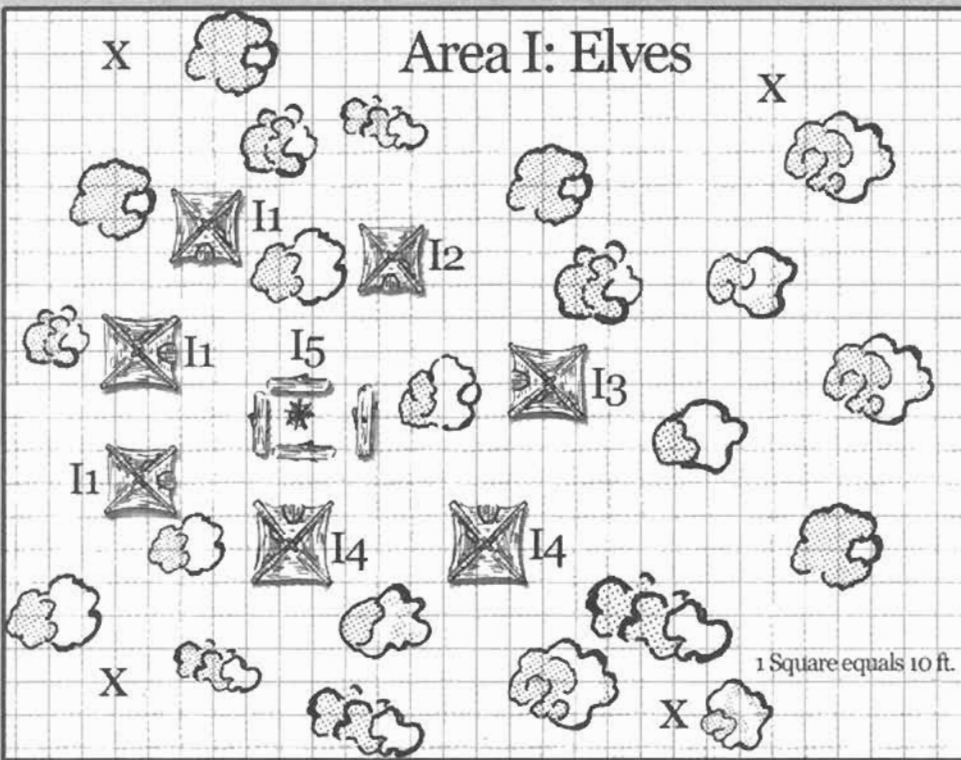


Elven
Guard

N

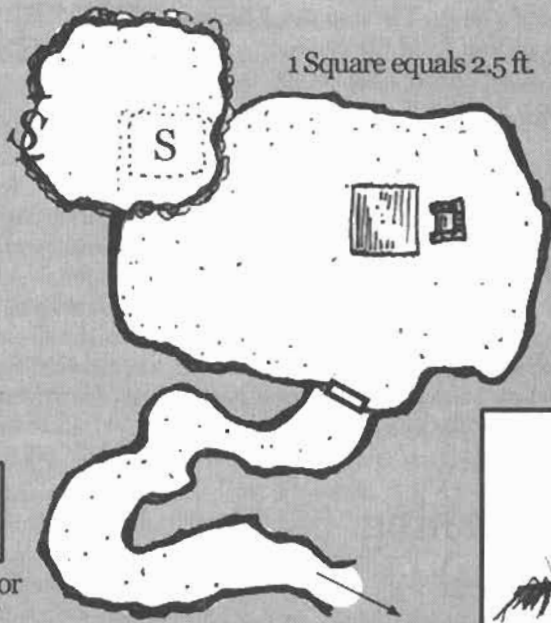


1 Square equals 10 ft.





Moaning Tree Clearing



Moaning Tree (Cutaway)



Stone Table and Chair



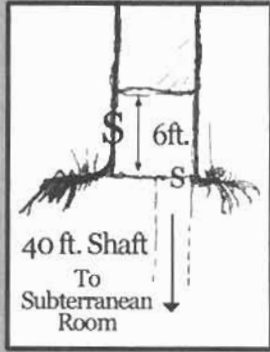
Secret Door



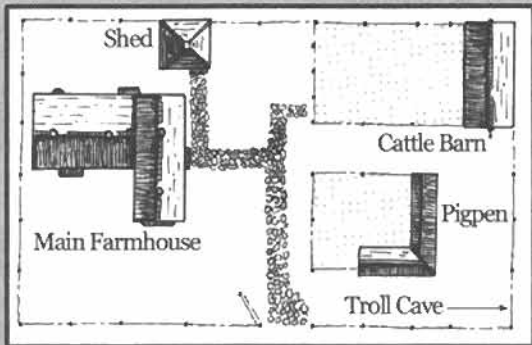
Secret Door in Floor



Door



Area J: The Moaning Tree



Approx. 300 ft by 200 ft.



Trees



Bones



Column



Stalactites



Stalagmites



Bed



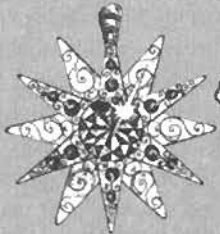
Rubble



Chest

Bourne Farm

N

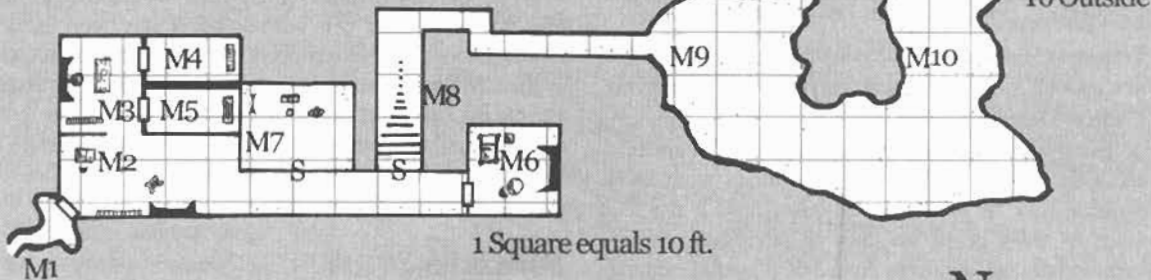


Area K: Bourne Farm and Troll Cave

1 Square equals 5 ft.

Area M: Delvo's Lair

Surfaces approximately
a quarter mile to the NE.



Door



Secret Door



Stairs Down



Fireplace



Shelf



Table



Tables
and
Chairs



Cushioned
Chair



Rack



Bed

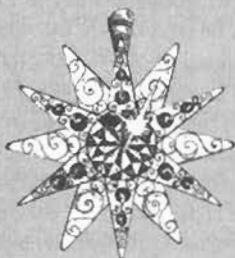


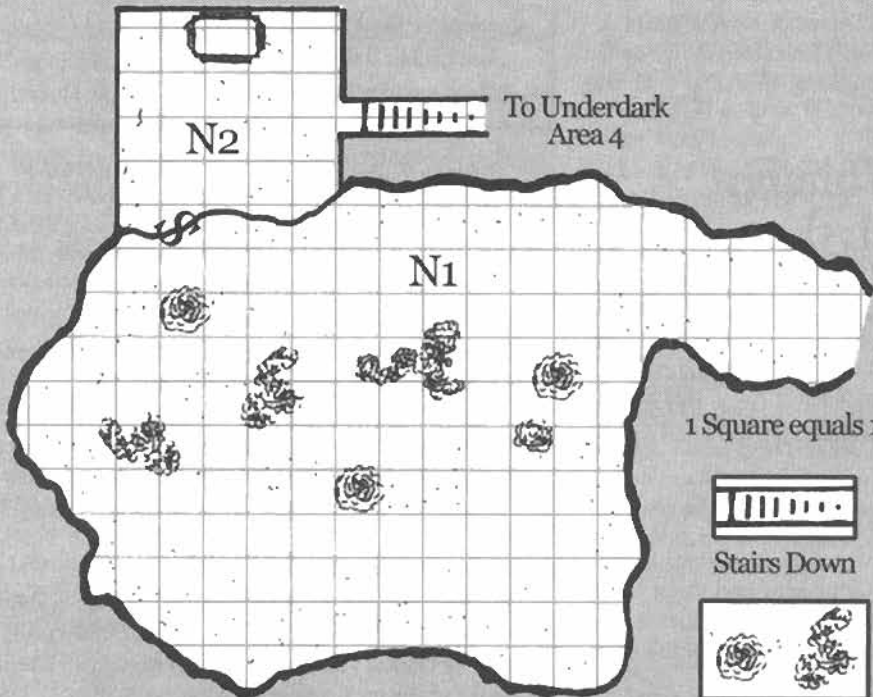
Sacrificial Stone
and Offering Dish



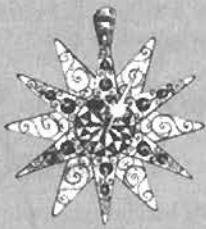
Statue of
Nergal

N





N



1 Square equals 10 ft.



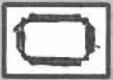
Stairs Down



Secret Door



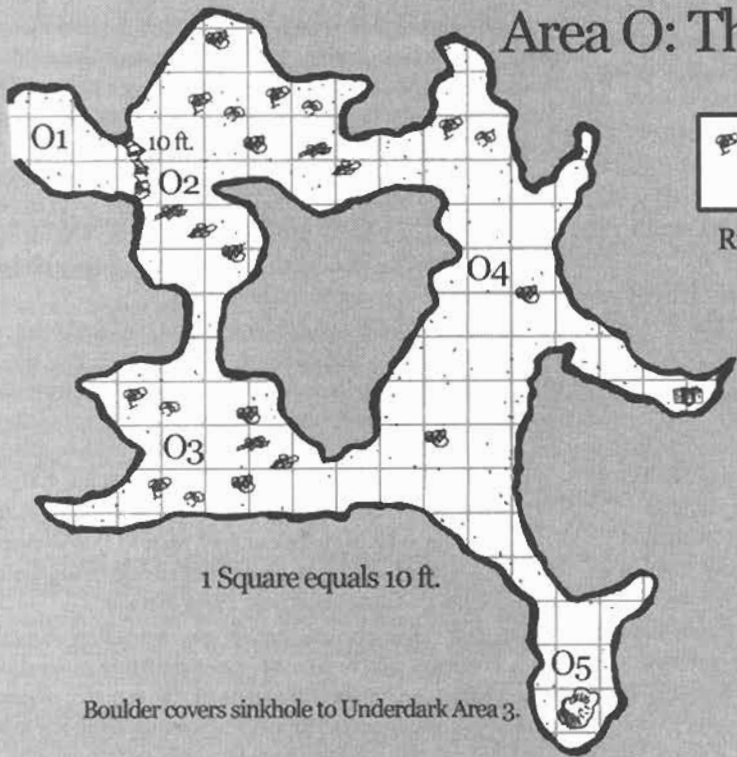
Treasure Piles



Stone Slab

Area N: The Wyvern Lair

Area O: The White Fist Orcs



Rubbish



Ledge

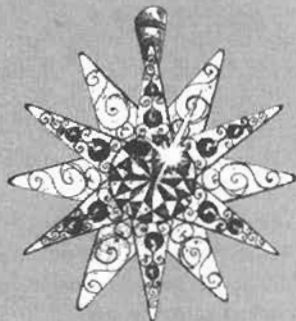


Boulder



Chest

N



Boulder covers sinkhole to Underdark Area 3.

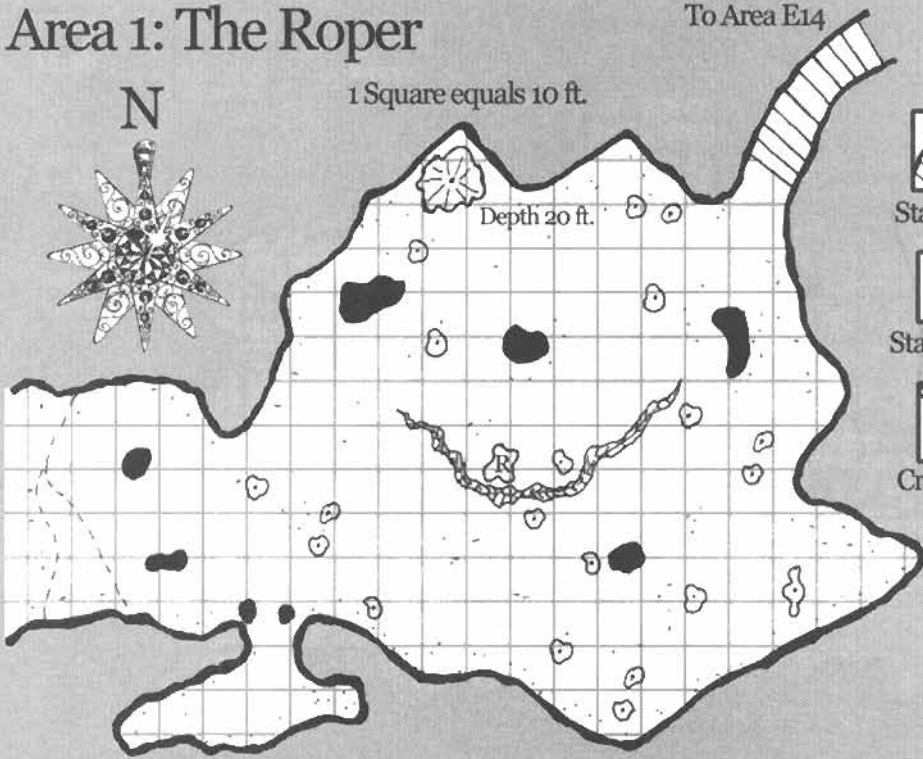
Area 1: The Roper

To Area E14

N

1 Square equals 10 ft.

Depth 20 ft.



Stairs Up



Sinkhole



Stalactites



Column



Crevasse



Roper

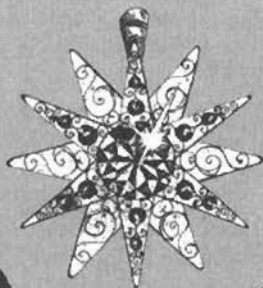


Terrace Line

Area 2: Locked Door

To Crus' Tower

N



Gradual Slope Upward

1 Square equals 10 ft.



Arcane Locked Door



Stalagmite



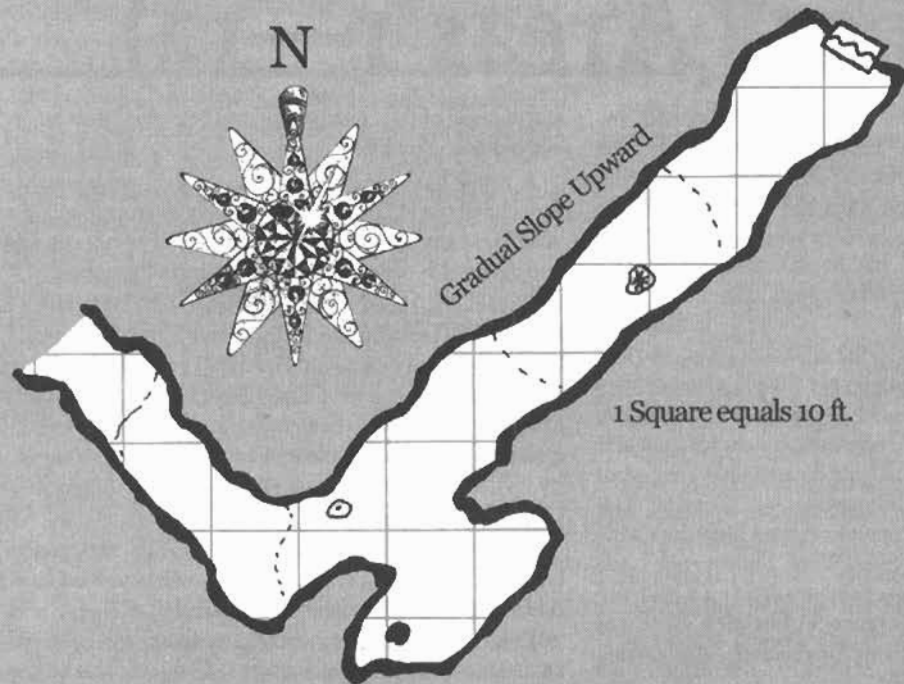
Stalactite



Column



Terrace Line



Area 3: Large Cavern



Crevasse



Sinkhole



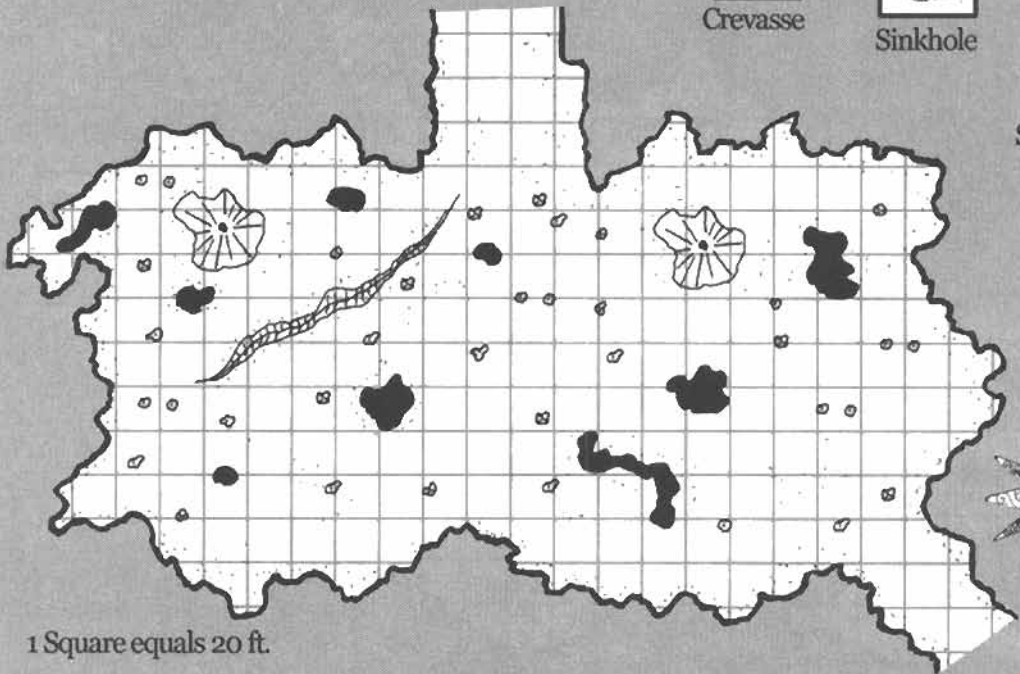
Columns



Stalagmites



Stalactites



N



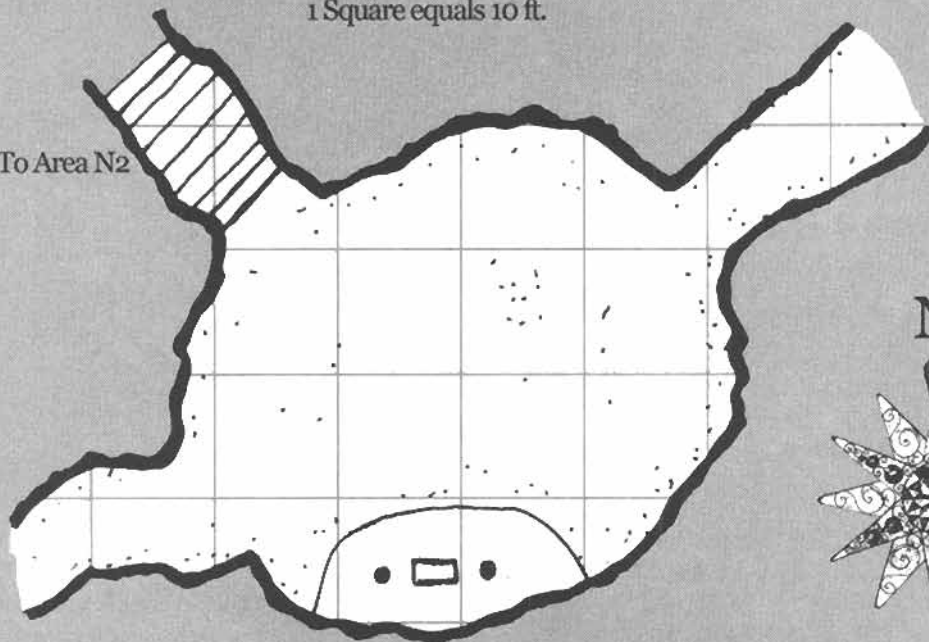
1 Square equals 20 ft.

Area 4: The Temple

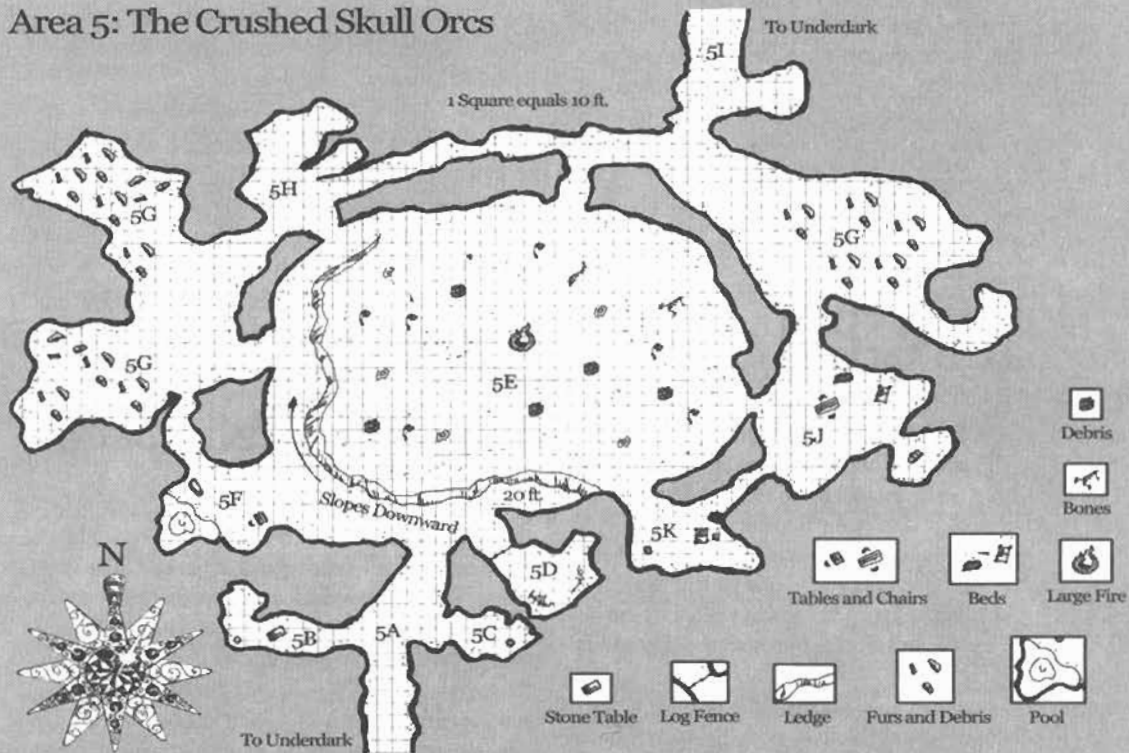
1 Square equals 10 ft.



To Area N2

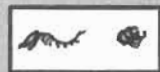


Area 5: The Crushed Skull Orcs



Area 6: The Gnoll Band

1 Square equals 10 ft.



Bones



Column



Beds



Chest

Area 7: Behir Lair



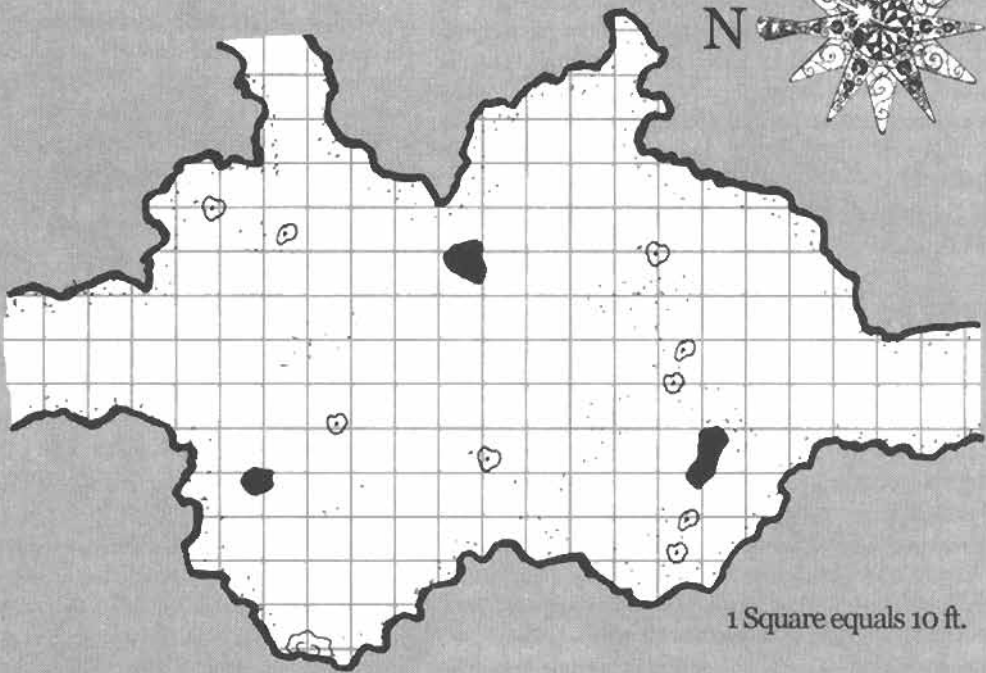
Pool



Column



Stalactites



1 Square equals 10 ft.

Area 8: The Filthy Cave

To Area B4



Column



Bones,
Junk, etc.

1 Square equals 5 ft.

N



1 Square equals 10 ft.

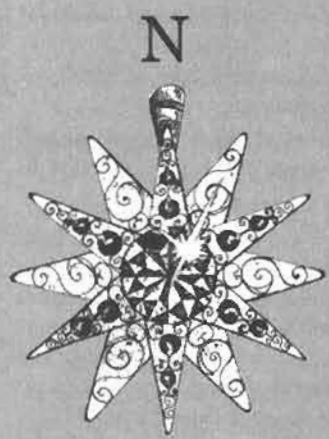
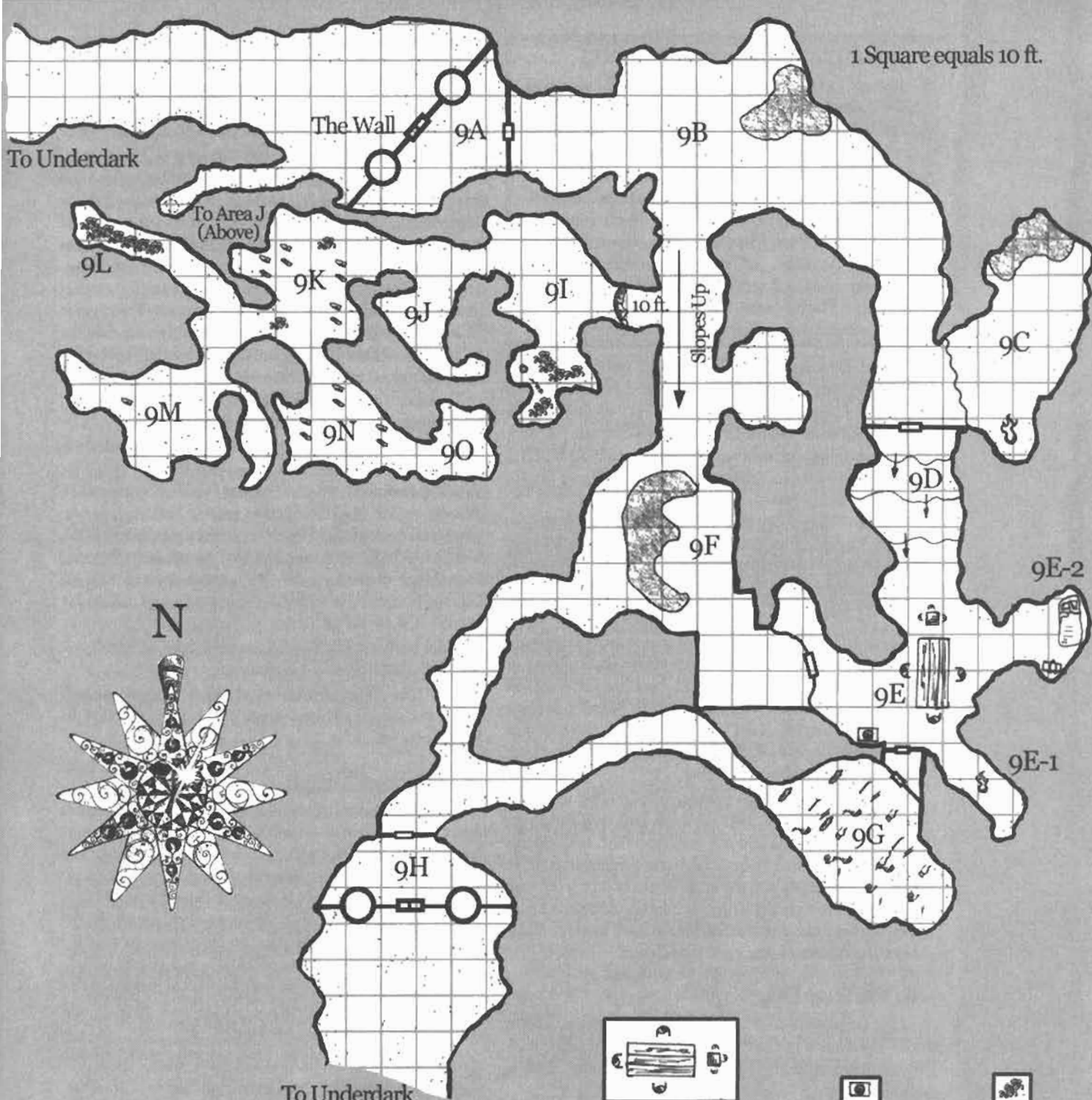
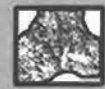


Table and Chairs

Keg and Stand

Rubbish



Tower

Iron Double Doors

Door

Molten Rock Pit

Ledge

Curtain

Idol

Chest







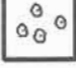







Bed

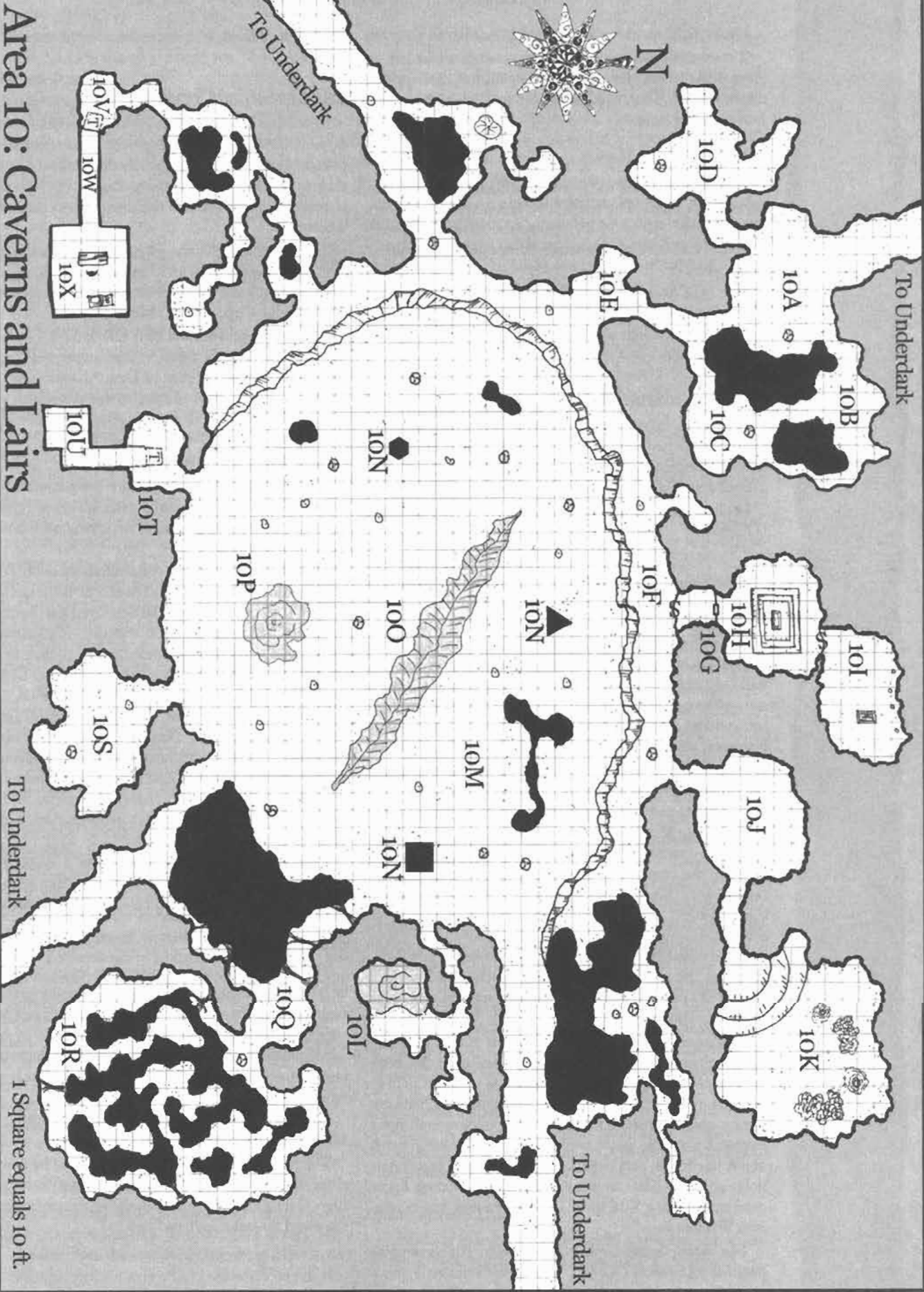
Bones

Area 9: The Fire Giant and His Friends

Area 10: Caverns and Lairs

1 Square equals 10 ft.

-  Door
-  Secret Door
-  Sinkhole
-  Crevasse
-  Ledge
-  Pool
-  Stalactites
-  Stalagmites
-  Column
-  Raised Dais and Crypt
-  Glass Coffin
-  Cobwebs
-  Steps
-  Treasure Piles



Area 11: Abandoned Lair



Area 12: The Dark Lake

To Area C23

Stream flows
under bank.

Shore

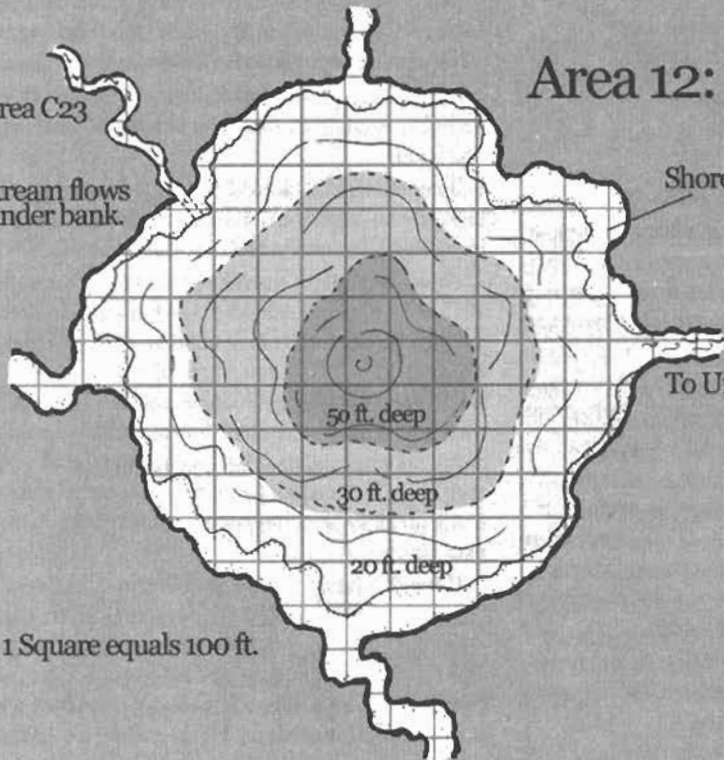
To Underground

50 ft. deep

30 ft. deep

20 ft. deep

1 Square equals 100 ft.



Passes Under

Ledge 30 ft.

Door

Iron Door

False Door

Secret Door

Trap Door

Stairs Down

Stairs Up

Passes Under

Basin

Sarcophagus

Map Cubicles

Note: Some areas/items shown larger than actual size to indicate location.